

HOW TO CREATE YOUR SNOWFLAKES

STEP 1: PRINT

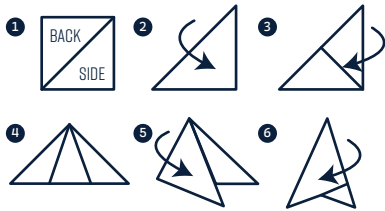
- PRINT ON LIGHTWEIGHT PAPER FOR BEST RESULTS.
- SELECT "ACTUAL SIZE" OR 100% IN YOUR PRINT SETTINGS.

STEP 2: CUT

- USE SCISSORS TO CUT OUT THE SQUARE.

STEP 3: FOLD

- FOLD ON THE SOLID LINES LIKE BELOW.



STEP 4: CUT

- SNIP OFF THE EXTRA FLAPS.
- CAREFULLY CUT ALONG THE DOTTED LINES.

STEP 5: UNFOLD & ENJOY

- UNFOLD TO REVEAL THE SNOWFLAKE.

