

Grade 3  
Attire  
Journey

Grade 4  
Shadow Play  
Wild Thing

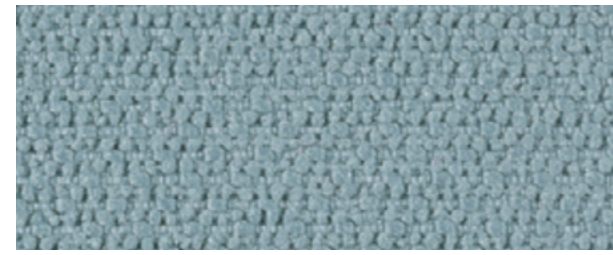
Grade 5  
Tempest  
Woodland II  
Wow Factor



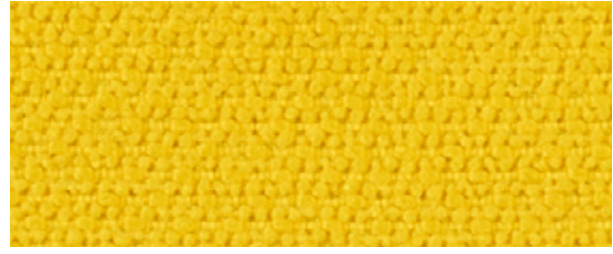
1 Mitten



2 Jingle



12 Forecast



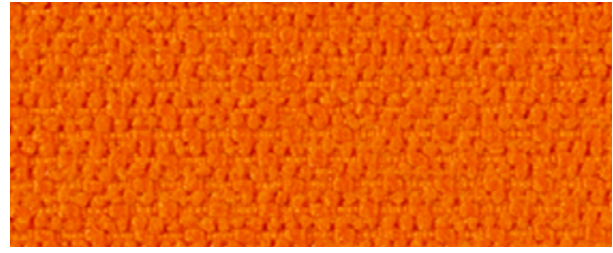
4 Twist



3 Beach



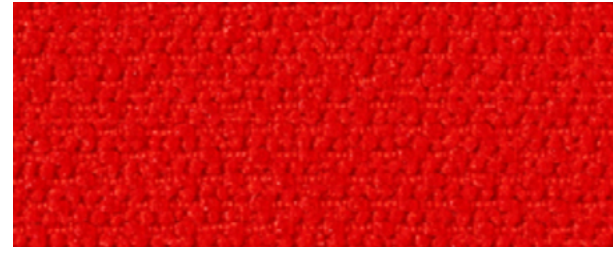
6 Allspice



5 Canyon



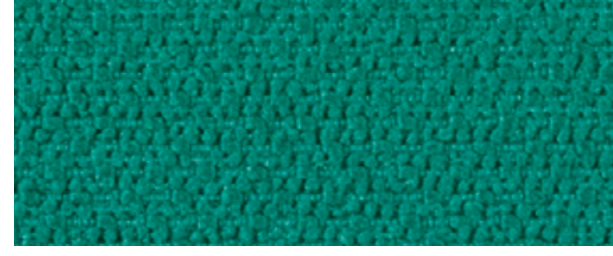
9 Hot Pink



10 Banner



7 Avocado



8 Aqua



17 Mushroom



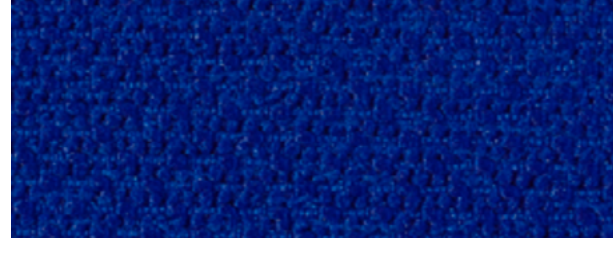
14 Arcade



13 Wavelength



16 Chime



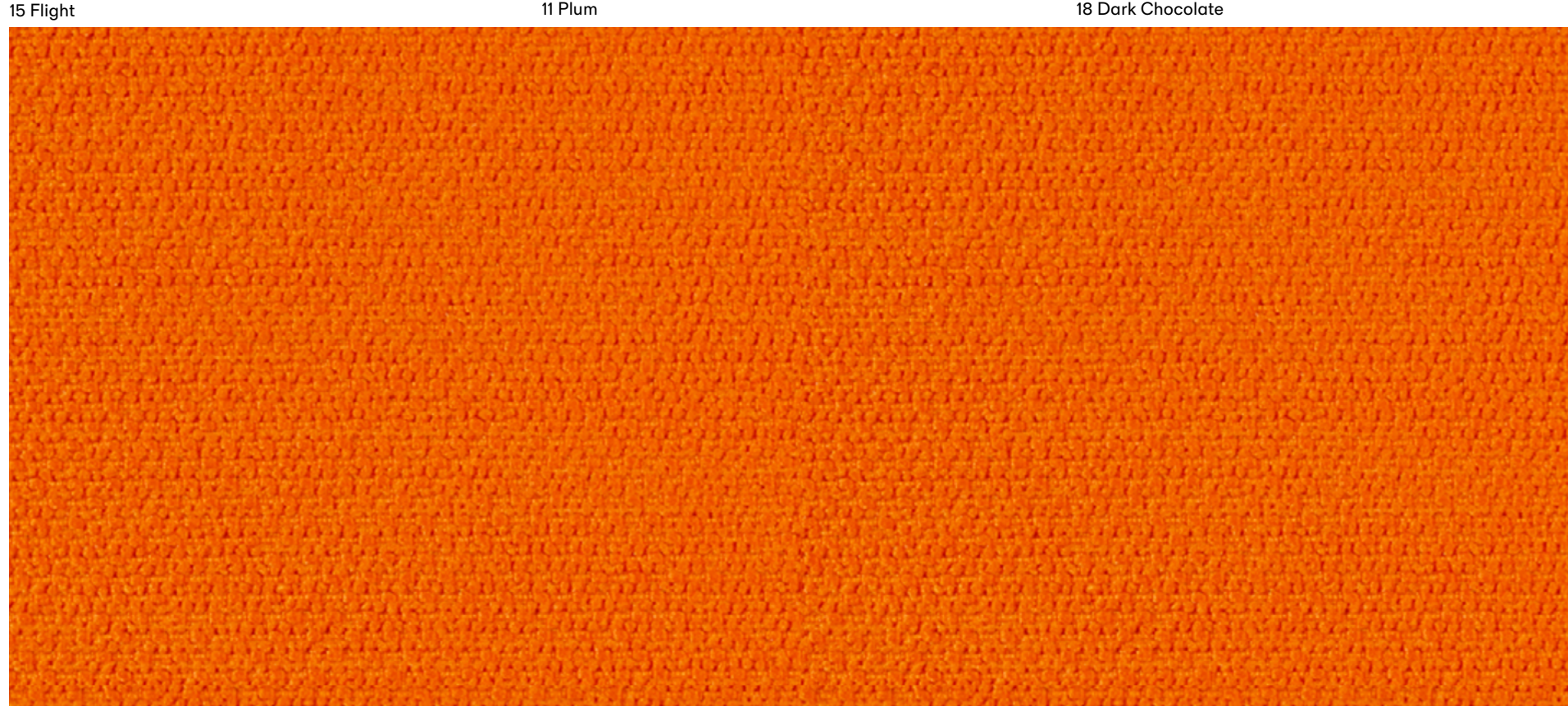
15 Flight



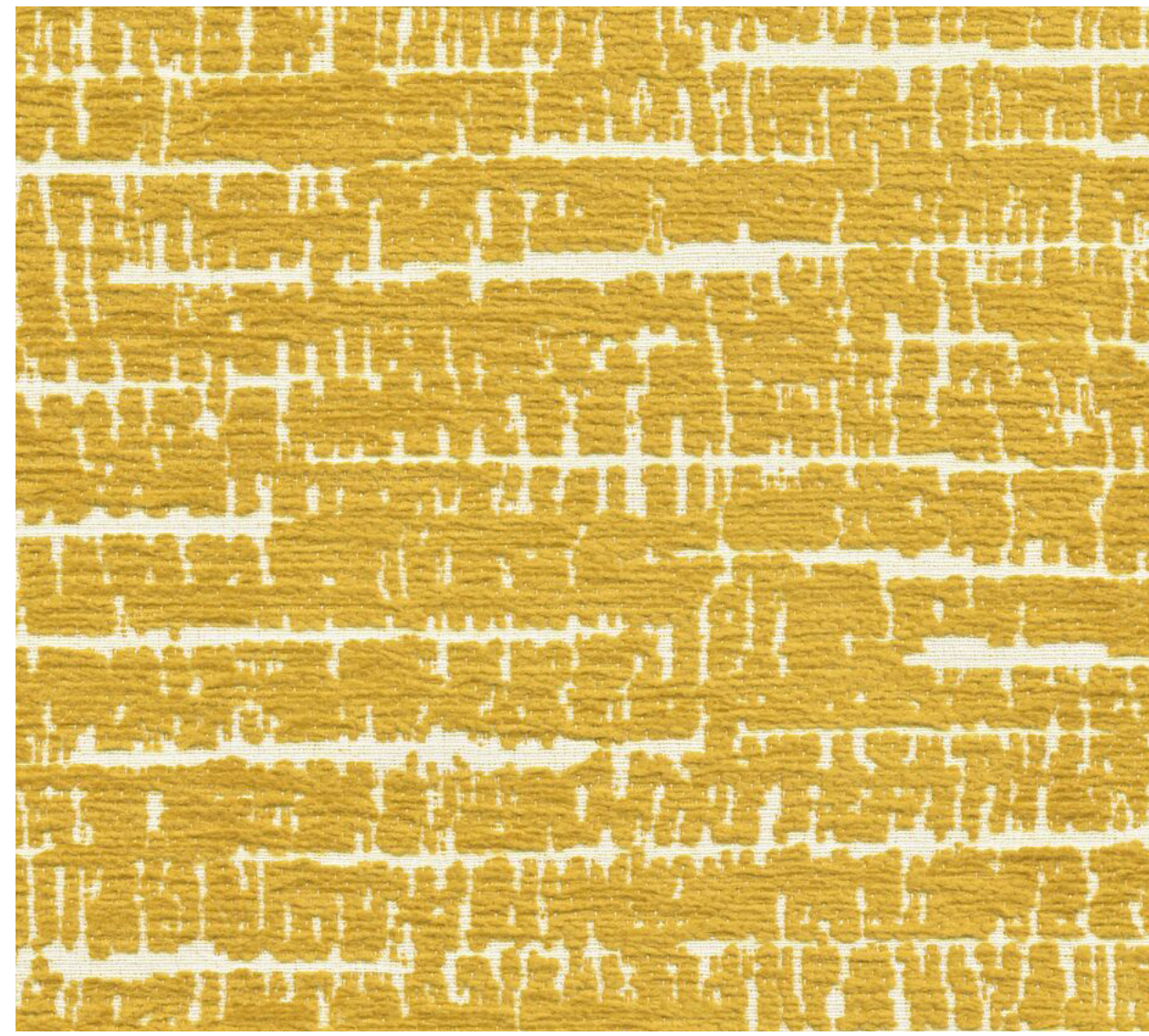
11 Plum



18 Dark Chocolate



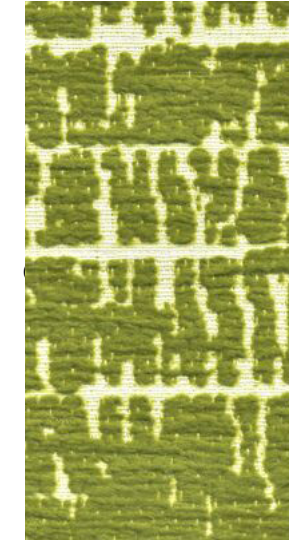
Journey 5 Canyon



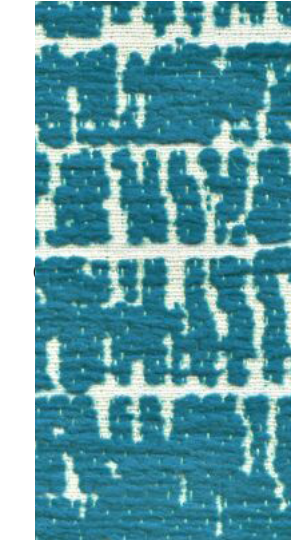
Woodland II 2 Cypress



14 Dogwood



13 Willow



12 Rainfall



10 Sycamore



14 Dogwood



8 Hickory



7 Juniper



6 Sprite



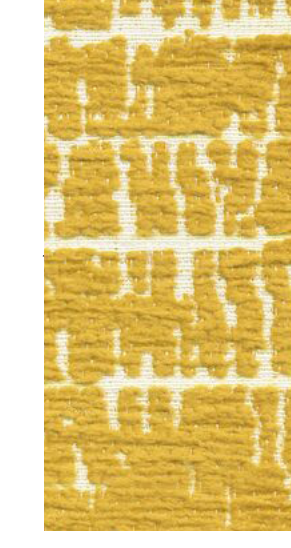
5 Alder



4 Red Pine



3 Blue Spruce



2 Cypress



Shadow Play 4 Glacier



8 Sterling



1 Jasmine



2 Rosewater



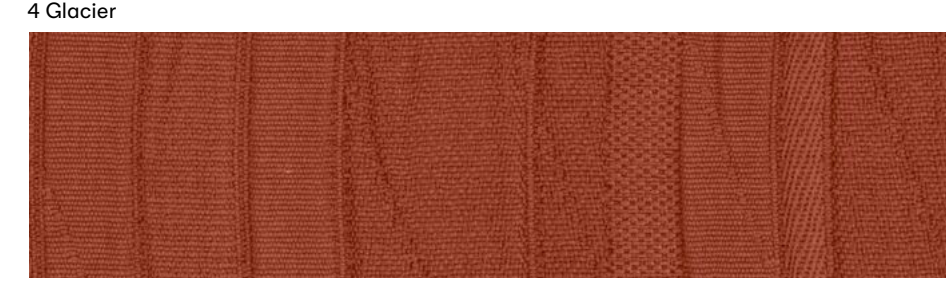
3 Zest



4 Glacier



5 Basil



6 Paprika



7 Aqua



10 Onyx



9 Shale

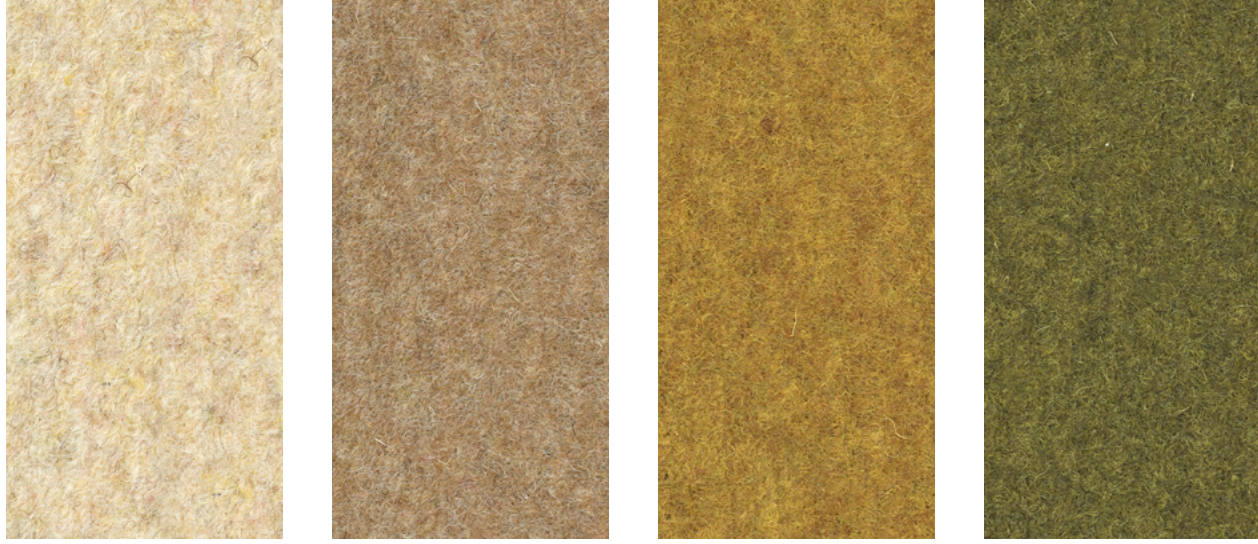
Grade 3  
Attire  
Journey

Grade 4  
Shadow Play  
Wild Thing

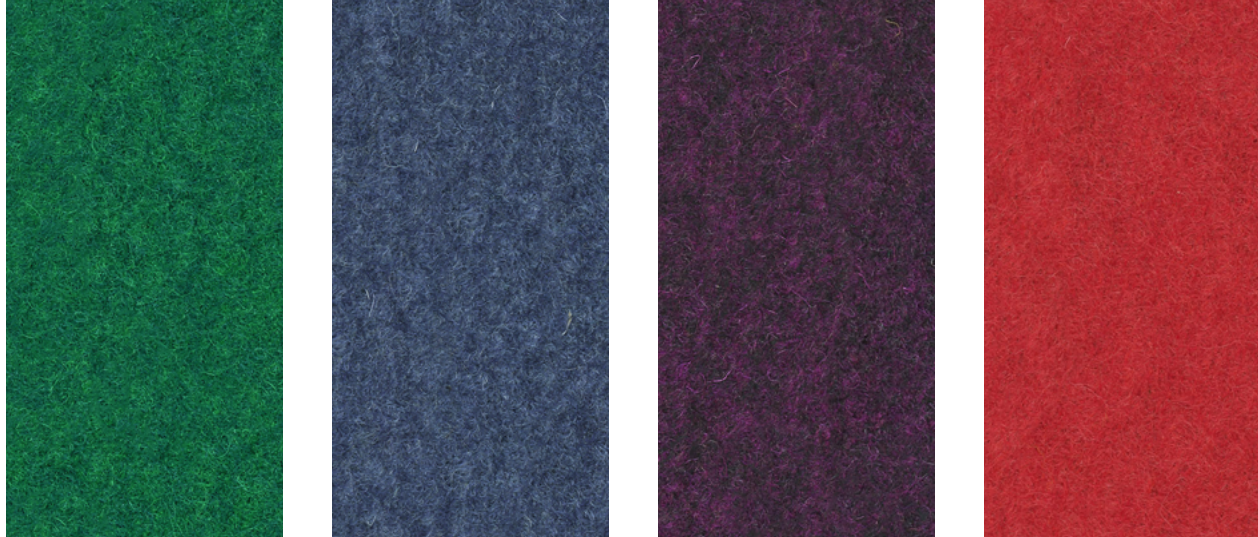
Grade 5  
Tempest  
Woodland II  
Wow Factor



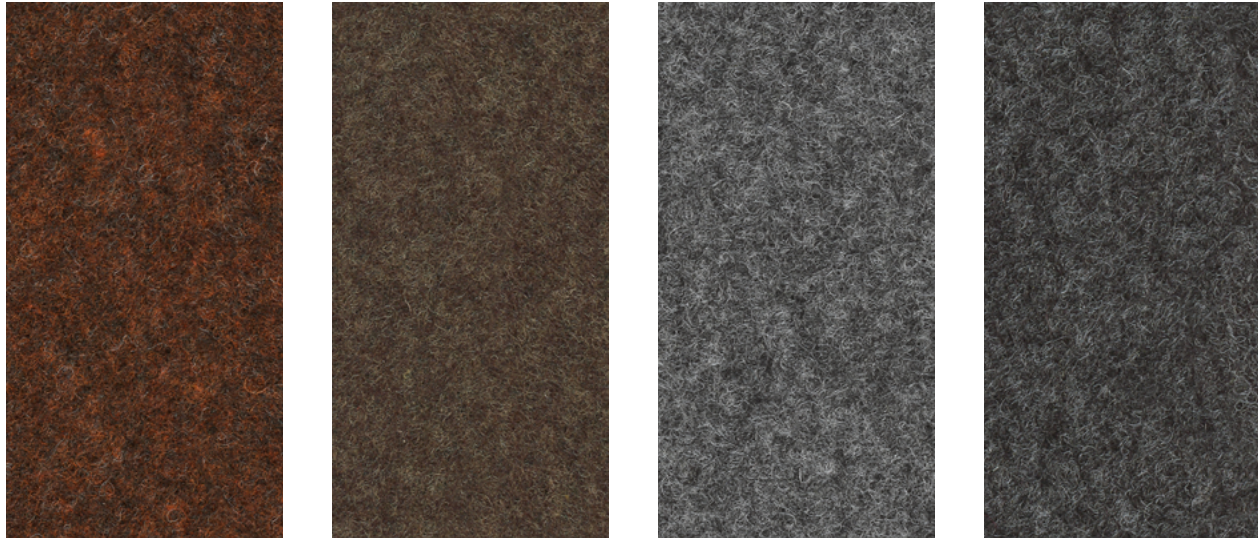
Tempest 1 Calm



1 Heaven 2 Excursion 3 Sunset 4 Viper



5 Holiday 6 Tahiti 8 Charisma 7 Chili



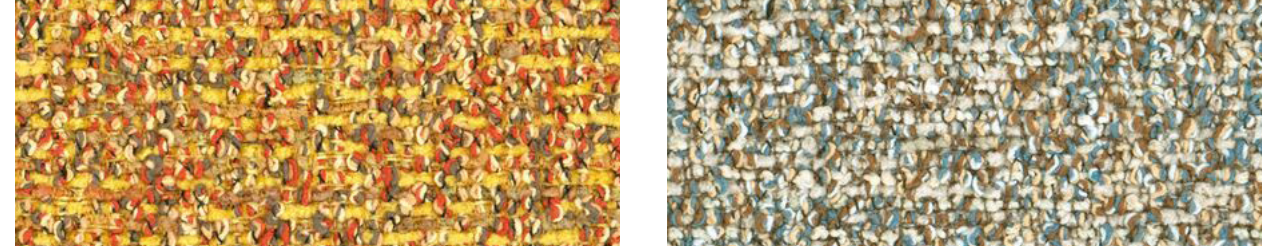
9 Cosmic 10 Tea Leaf 11 Moonbeam 12 Raven



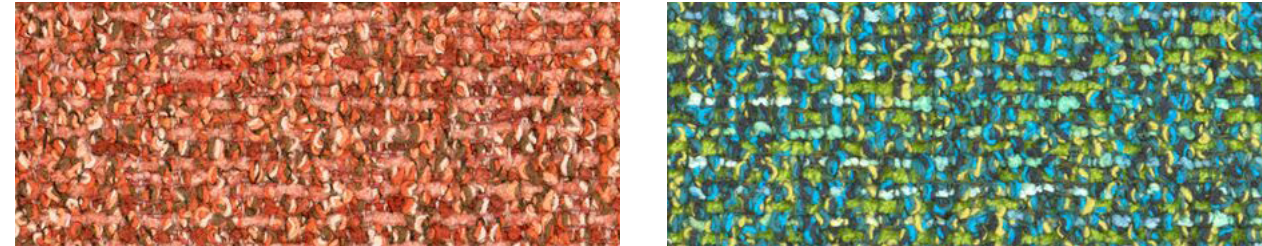
Wow Factor 5 Holiday



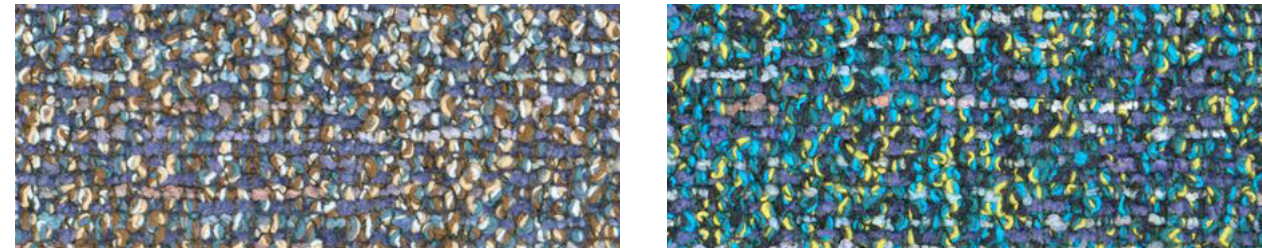
1 Calm 2 Mist



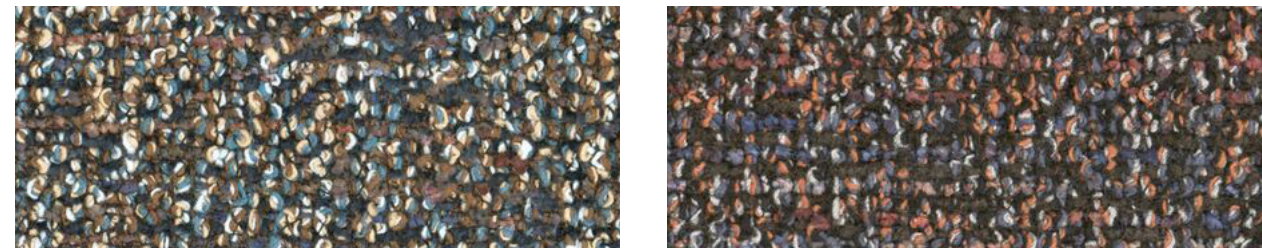
3 Citrus 8 Season



4 Fierce 6 Seaglass



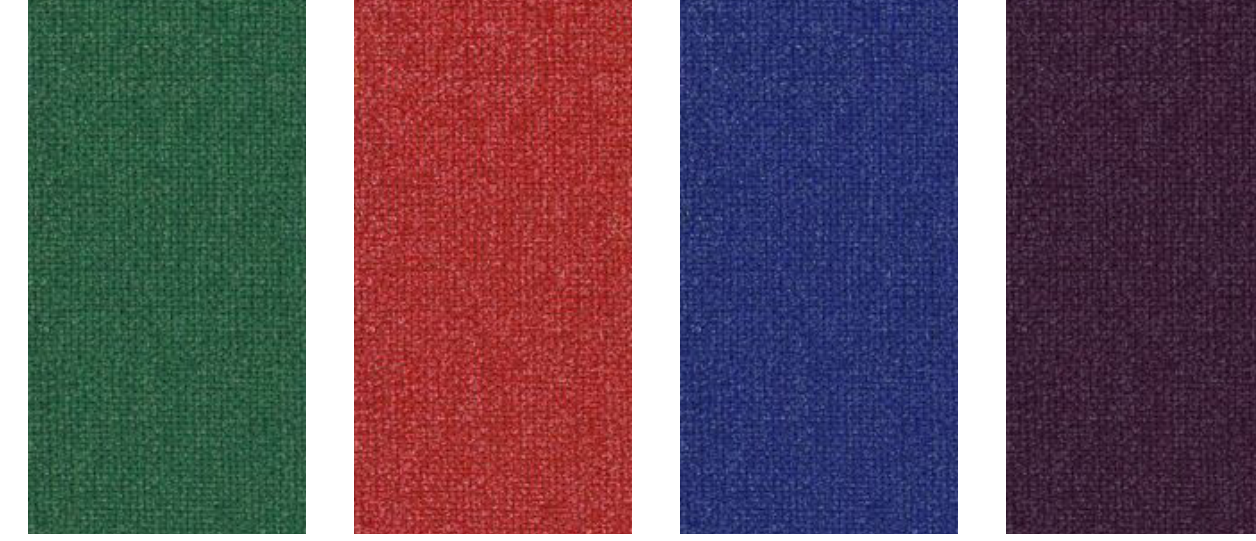
5 Aurora 7 Lightning



9 Electric 10 Midnight



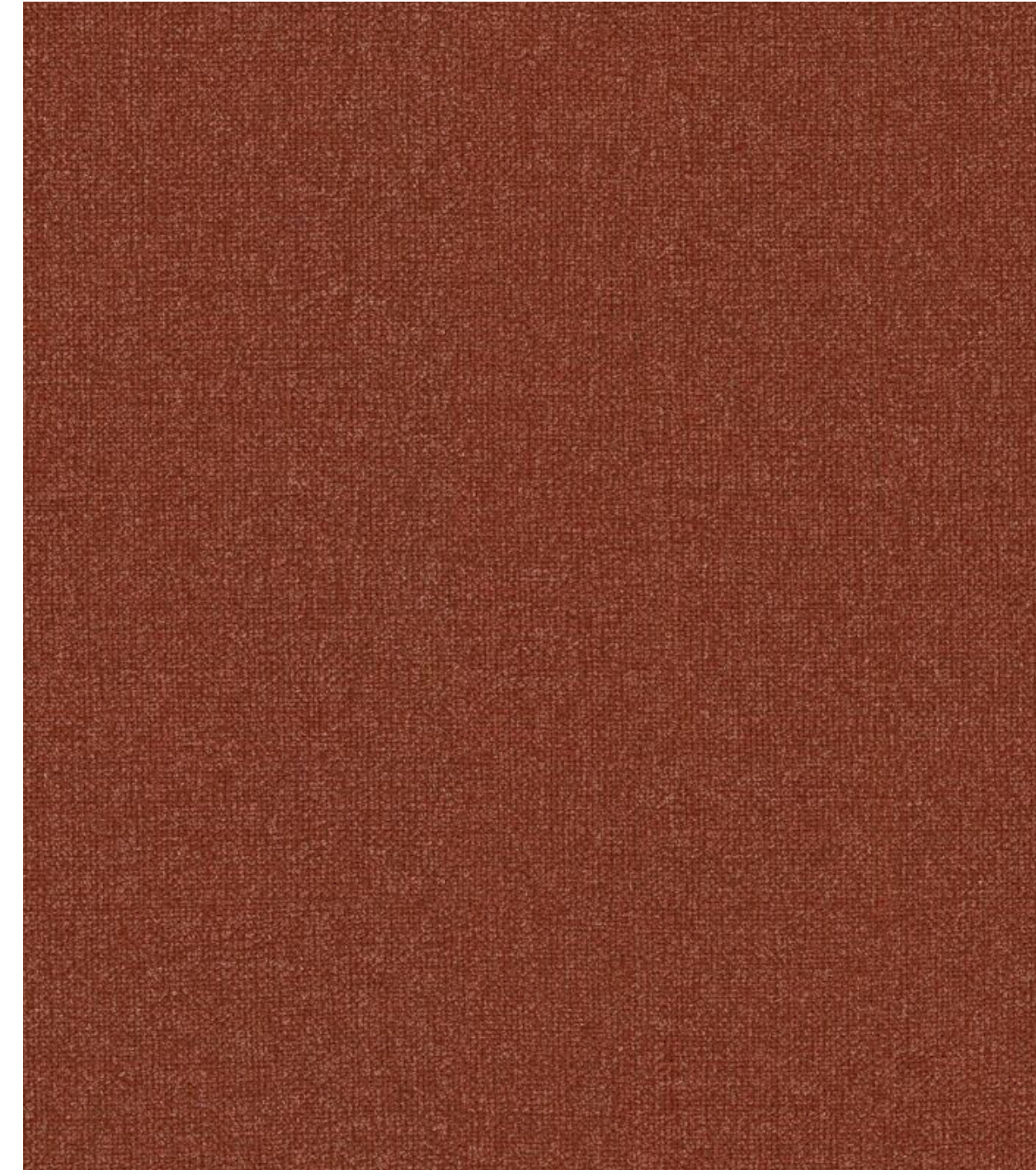
1 Shale 10 Elephant 8 Cedar 3 Pottery



2 Sprout 4 Ribbon 6 Cobalt 5 Elderberry



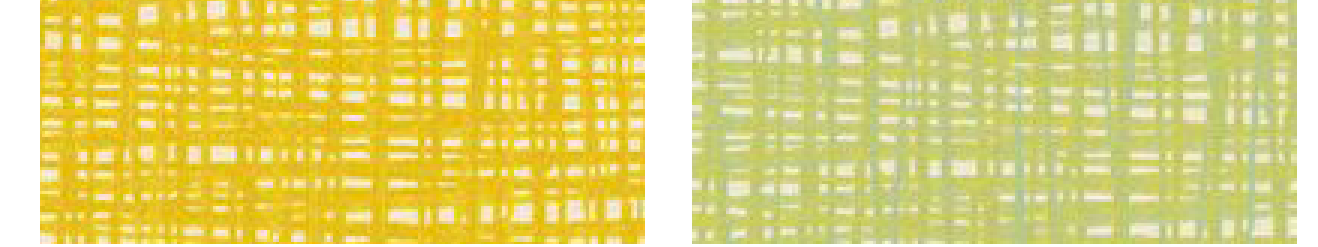
7 Ink Blot 9 Brownstone 11 Dusk 12 Night Sky



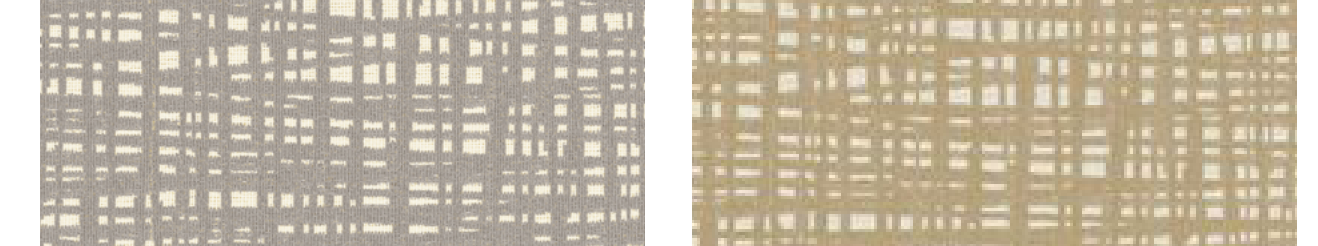
Attire 3 Pottery



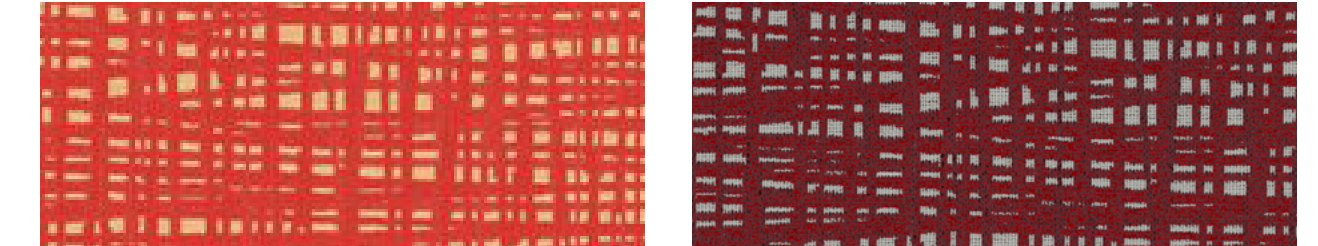
Wild Thing 4 Upbeat Blue



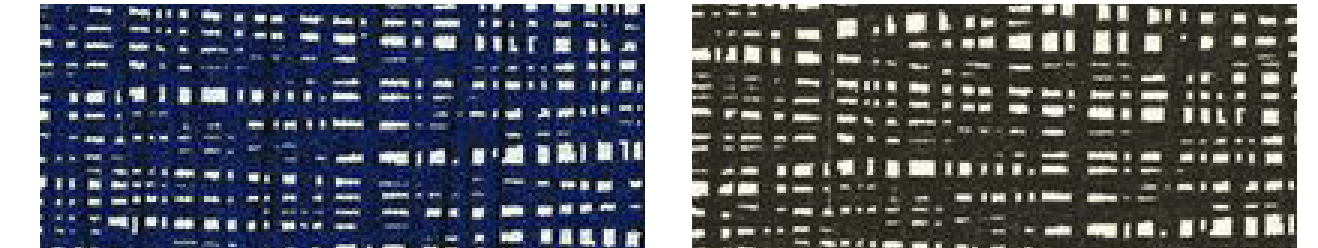
2 Electric 3 Peppermint



7 Freeway 1 Wafer



5 Sizzle 6 Mulberry



4 Upbeat Blue 8 Black Pearl

Grade 3  
Attire  
Journey

Grade 4  
Shadow Play  
Wild Thing

Grade 5  
Tempest  
Woodland II  
Wow Factor

The textiles presented have been carefully selected to complement Arcadia and Encore's extensive range of seating designs.

Attire  
Grade: 3  
Content: 56% Wool, 24% Nylon, 20% Polyester  
Finish, Backing: Stain Repellent, None  
Abrasion: 100,000 Double rubs

Journey  
Grade: 3  
Content: 50% Polyester, 50% Post-Consumer Recycled Polyester  
Finish, Backing: Stain Repellent, Acrylic  
Abrasion: 100,000 Double rubs

Shadow Play  
Grade: 4  
Content: 100% Rapidly Degradable Post-Consumer Recycled Polyester  
Finish, Backing: None, None  
Repeat: 9 ½" V, 12" H  
Abrasion: 100,000 Double rubs

Tempest  
Grade: 5  
Content: 46% Cotton, 36% Polyester, 10% Rayon, 8% Acrylic  
Finish, Backing: None, None  
Abrasion: 100,000 Double rubs

Wild Thing  
Grade: 4  
Content: 59% Post-Consumer Recycled Polyester, 41% Polyester  
Finish, Backing: Stain Repellent, None  
Repeat: 18 ½" V, 27" H  
Suitable for non-match  
Abrasion: 50,000 Double rubs

Woodland II  
Grade: 5  
Content: 49% Polyester, 31% Post Consumer Recycled Polyester, 20% Post-Industrial Recycled Polyester  
Finish, Backing: Stain Repellent, Acrylic  
Repeat: 12 ½" V, 13 ¾" H  
Suitable for non-match  
Abrasion: 100,000 Double rubs

Wow Factor  
Grade: 5  
Content: 75% Wool, 25% Polyester  
Finish, Backing: None, None  
Abrasion: 60,000 Double rubs

TYPICAL FOR ALL  
Flammability: These textiles meet all appropriate flammability requirements for contract use.

Reduced environmental impact: These textiles offer reduced environmental impact.  
Find complete product information at [www.knolltextiles.com](http://www.knolltextiles.com)

Maintenance and samples: Call 866.565.5858 or visit [www.knolltextiles.com](http://www.knolltextiles.com)

© 2023 Arcadia | Encore

[Arcadiacontract.com](http://Arcadiacontract.com) 714.562.8200

[Encoreseating.com](http://Encoreseating.com) 800.585.5957