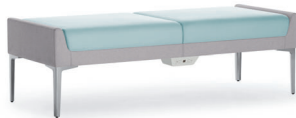


# ARCADIA + KAISER

## APPROVED PRODUCT REFERENCE GUIDE

WELCOME  
ZONE



THRIVE  
BAR

STAY AND  
LINGER

COMM  
UNITY



REFRESH

ON  
STAGE

OFF  
STAGE



# ARCADIA + KAISER

## APPROVED PRODUCT INDEX

WELCOME  
ZONE

### GUEST SEATING



FLIRT®



HAVEN



KINDRED



NIOS®



REPRISE



SIGN



SOLEIL

### STOOL SEATING



BRINK



CHATTER



INTIMA



STARKIE

### STOOL SEATING (CONT.)



UPWARD



WORKSMITH

### TABLES



AVELINA



CO-OP



DELEN



FLIRT®



HUSH



NIOS®



VERO



WORKSMITH

# GUEST SEATING

## APPROVED PRODUCT

WELCOME  
ZONE



### FLIRT® GUEST

- > 4-leg and swivel base models with fixed or flip-up seat options.
- > 4-leg base available with chrome casters or on glides.
- > Flip-up seat allows endless nesting capability for moving and storage ease.
- > Swivel base features auto-return as standard (fixed seat only).
- > Die-cast aluminum legs available in all standard and premium metal finishes.
- > Optional flip-up rotating tablet offered in Maple, Walnut and White Oak veneer, as well as laminate selections.



### HAVEN GUEST

- > Guest, bariatric, hip/easy access and patient chair models available in two frame options: Beech hardwood or metal.
- > Metal frame offered in three standard finishes as well as premium selections.
- > Bariatric settee available in two sizes.
- > Clean-out area between seat and back.
- > Arm caps feature finger-grip design for stability and are generously proportioned to offer greater support.
- > Beech wood, Corian® and black urethane arm cap options available.
- > All standard and custom wood finishes available in addition to laminate and Corian selections.
- > Hip/easy access chair features 24½" seat height and brushed stainless steel foot step.



# GUEST SEATING

## APPROVED PRODUCT

WELCOME  
ZONE



### KINDRED GUEST

- > Manufactured in Ash wood species.
- > Wood frame features radiused edges for smooth surface contact.
- > Available in all standard and custom wood finishes on Ash.
- > Non-skid glides available for hard-surface floors.



### NIOS® GUEST

- > Arm and armless models available with wood or metal legs as well as on a swivel pedestal base.
- > Tubular metal arm features black leather arm caps as standard.
- > Wood legs offered in Beech, Walnut and White Oak, in all standard and custom wood finishes.
- > Swivel base presented with auto-return feature.
- > Standard and premium finishes available on arms and metal base styles.
- > Non-skid glides for hard-surface floors offered on all models.

# GUEST SEATING

## APPROVED PRODUCT

WELCOME  
ZONE



### REPRISE GUEST

- > Guest, bariatric, hip/easy access and patient chair models available in two frame options: Beech hardwood or metal.
- > Metal frame offered in three standard finishes as well as premium selections.
- > Bariatric settee available in two sizes.
- > Clean-outs on every side, including between seat and back.
- > Features wall-saver leg design, radiused edges for smooth surface contact, and replaceable componentry.
- > Beech wood, Corian® and black or grey urethane arm cap options available.
- > All standard and custom wood finishes available in addition to laminate and Corian selections.
- > Hip chair features 24½" seat height and brushed stainless steel foot step.



### SIGN GUEST

- > Rectangular steel cantilever frame available in two finishes: Metallic Silver or Chrome.
- > Fully upholstered seat and back.
- > Wood and black urethane arm cap options.
- > Wood arm caps available in all standard and custom finishes on Beech.
- > Black glides standard.

# GUEST SEATING

## APPROVED PRODUCT

WELCOME  
ZONE



### SOLEIL GUEST

- > Guest, bariatric, patient and hip/easy access chair models available.
- > Metal frame available in two standard powdercoat finishes in addition to premium finish selections.
- > Wood, black urethane and Corian® arm cap options.
- > Wood arm caps available in Beech, Walnut and White Oak, in all standard and custom finishes.
- > Corian arm caps available in four standard colors.
- > Bariatric models accommodate up to 750 lbs. and are available in two sizes.
- > All models feature passive flex back, clean-out on all sides including between seat and back, wall-saver leg design and replaceable componentry.

# STOOL SEATING

## APPROVED PRODUCT

WELCOME  
ZONE



### BRINK STOOLS

- > Available in Beech, Walnut and White Oak, in all standard and custom finishes.
- > All wood, or wood with upholstered seat pad.
- > Counter and bar height models.
- > Maximum weight capacity of 350 lbs.
- > Metal frame available in standard and premium finishes.



### CHATTER STOOLS

- > Available in Beech, Walnut and White Oak, in all standard and custom finishes.
- > All wood, wood with upholstered seat or wood with upholstered seat and back options.
- > Counter and bar height models.
- > Maximum weight capacity of 275 lbs.
- > Metal footring offered in Chrome only.

# STOOL SEATING

## APPROVED PRODUCT

WELCOME  
ZONE



### INTIMA STOOLS

- > Bar height stools manufactured in Beech.
- > Features upholstered seat and chrome footring.
- > All standard and custom finishes available.
- > 275 lbs. maximum weight capacity.



### STARKIE STOOLS

- > Models offered with and without back in three heights: 18", 25" and 30".
- > Presented in Ash wood in all standard and custom finishes.
- > Seat pad features suspension support for optimum comfort.
- > Footring offered in Chrome only.
- > 250 lbs. maximum weight capacity.

# STOOL SEATING

## APPROVED PRODUCT

WELCOME  
ZONE



### UPWARD STOOLS

- > Low and mid-back models.
- > One-piece shell available in White Oak, Walnut and Beech.
- > Offered in all wood or with an upholstered seat cushion.
- > Metal frame available in standard and premium finish selections.
- > 350 lb. maximum weight capacity.



### WORKSMITH STOOLS

- > Offered in two heights: 18"-24" and 24" - 30", with or without back.
- > Rotate seat to raise or lower to desired height.
- > Available with optional upholstered seat pad.
- > Footring is positioned 11-3/4" from the floor and features textured matte black finish.

# TABLES

## APPROVED PRODUCT

WELCOME  
ZONE



### AVELINA MEETING TABLES

- > Available in custom 32" table height for ADA compliance, in addition to 42" height.
- > Depth options include: 20", 30", 36" and 42".
- > Offered in Maple, Walnut and White Oak veneer as well as laminate, Corian® and Formica Colorcore® finish options.
- > Panel bases feature adjustable glides as standard for leveling purposes.
- > End panel bases, center panel bases and underside of tables feature removable panels for wire management accessibility.
- > Select technology options for top surface and/or side-mount placement available on all sizes.



### CO-OP MEETING TABLES

- > Arc square, arc rectangle and rectilinear tables manufactured in Maple, White Oak and Walnut.
- > All standard and custom wood finishes available as well as laminate selections.
- > Offered in 27", 29" and 39" heights, together with a variety of top sizes.
- > 1 ½" table top thickness, with veneer or laminate self edge options.
- > Base available in standard and premium metal finishes.
- > Accompanying seating collection also offered.

# TABLES

## APPROVED PRODUCT

WELCOME  
ZONE



### DELEN MEETING TABLES

- > Table tops manufactured in Ash and Walnut wood species.
- > Two table heights offered: 29" and 42" 1 1/2" top thickness for round and rectangle tables, and 1 1/4" for wall-mount and sidebar tables.
- > Plank-style available on sidebar and rectangle tables.
- > Solid wood, veneer and laminate options.
- > Veneer direction will run lengthwise on all rectangle tables 96" and under.
- > Available in standard Ash and Walnut wood finishes.
- > Laminate tops available in all Arcadia standard laminates.
- > Table bases manufactured in solid Ash wood and feature metal accent detail.
- > Accompanying benches manufactured in Ash and Walnut wood species and feature metal accent detail on leg interior.



### FLIRT® MEETING TABLES

- > Round and arc square top shapes offered in Maple, Walnut and White Oak veneer as well as laminate, Corian® and back-painted glass.
- > Metal base manufactured in aluminum and offered in standard as well as premium finish selections.
- > Base design facilitates wire management for through-the-surface electrical and/or data capability.



# TABLES

## APPROVED PRODUCT

WELCOME  
ZONE



### HUSH MEETING TABLES

- > Available in round, convex/convex square and convex/convex rectangle top shapes.
- > Offered in 29" and 39" table heights. Custom height options between 29" - 39" also available.
- > All standard and custom wood finishes available on Beech as well as laminate selections.
- > Base available in Charcoal Grey, Metallic Silver, Chrome and Satin Black finishes as well as premium selections.
- > Bases feature adjustable black glides.



### NIOS® MEETING TABLES

- > Round, arc square and arc rectangle tables manufactured in three heights: 26", 29" and 42".
- > Custom height options between 26" - 42" also available.
- > Tables manufactured in Maple, Walnut and White Oak.
- > Tops available in all standard and custom wood finishes as well as laminate, Corian® and back-painted glass selections.
- > Metal pedestal base facilitates through-the-surface power capability and features adjustable glides.
- > Standard and premium base finish options.
- > Various power units available to address specific electrical and/or data preferences.
- > Accompanying lounge, bench and guest seating offered as well as occasional tables.

# TABLES

## APPROVED PRODUCT

WELCOME  
ZONE



### VERO MEETING TABLES

- > Round, square, rectilinear and rectangle top shape options offered in three heights: 27", 29" and 42".
- > Available in Maple, Walnut and White Oak wood veneer as well as laminate and Corian® selections.
- > Signature metal base available in standard and premium finishes.
- > Standard finishes include Polished Aluminum, Metallic Silver, Metallic Champagne and Charcoal Grey.
- > Base design facilitates wire management for through-the-surface power capability.
- > Various power units available to address specific electrical and/or data preferences.



### WORKSMITH MEETING TABLES

- > Offered in three heights: 26", 29" and 42" (varies with top size).
- > Solid Ash wood or cast metal leg options.
- > Cast metal legs offered on 29" and 42" table heights only and feature textured matte black finish.
- > Planked tops available in Ash solid wood as well as veneer and laminate options.
- > Non-planked tops available in veneer, laminate and clear glass (select sizes).
- > Various power units available to address specific electrical and/or data preferences.
- > Accompanying easels and a mobile cart also offered.

# ARCADIA + KAISER

## APPROVED PRODUCT INDEX

THRIVE  
BAR

### GUEST SEATING



FLIRT®



KINDRED



NIOS®

### STOOL SEATING



BRINK



CHATTER



INTIMA



STARKIE



UPWARD



WORKSMITH

# ARCADIA + KAISER

## APPROVED PRODUCT INDEX

THRIVE  
BAR

### TABLES



AVELINA



DELEN



FLIRT®



HUSH



NIOS®



VERO



WORKSMITH

# GUEST SEATING

## APPROVED PRODUCT

THRIVE  
BAR



### FLIRT® GUEST

- > 4-leg and swivel base models with fixed or flip-up seat options.
- > 4-leg base available with chrome casters or on glides.
- > Flip-up seat allows endless nesting capability for moving and storage ease.
- > Swivel base features auto-return as standard (fixed seat only).
- > Die-cast aluminum legs available in all standard and premium metal finishes.
- > Optional flip-up rotating tablet offered in Maple, Walnut and White Oak veneer, as well as laminate selections.



### KINDRED GUEST

- > Manufactured from Ash wood species.
- > Wood frame features radiused edges for smooth surface contact.
- > Available in all standard and custom wood finishes on Ash.
- > Non-skid glides available for hard-surface floors.

# GUEST SEATING

## APPROVED PRODUCT

THRIVE  
BAR



### NIOS® GUEST

- > Arm and armless models available with wood or metal legs as well as on a swivel pedestal base.
- > Tubular metal arm features black leather arm caps as standard.
- > Wood legs offered in Beech, Walnut and White Oak, in all standard and custom wood finishes.
- > Swivel base presented with auto-return feature.
- > Standard and premium finishes available on arms and metal base styles.
- > Non-skid glides for hard-surface floors offered on all models.

# STOOL SEATING

## APPROVED PRODUCT

THRIVE  
BAR



### BRINK STOOLS

- > Available in Beech, Walnut and White Oak, in all standard and custom finishes.
- > All wood, or wood with upholstered seat pad.
- > Counter and bar height models.
- > Maximum weight capacity of 350 lbs.
- > Metal frame available in standard and premium finishes.



### CHATTER STOOLS

- > Available in Beech, Walnut and White Oak, in all standard and custom finishes.
- > All wood, wood with upholstered seat or wood with upholstered seat and back options.
- > Counter and bar height models.
- > Maximum weight capacity of 275 lbs.
- > Metal footring offered in Chrome only.

# STOOL SEATING

## APPROVED PRODUCT

THRIVE  
BAR



### INTIMA STOOLS

- > Bar height stools manufactured in Beech.
- > Features upholstered seat and chrome footring.
- > All standard and custom finishes available.
- > 275 lbs. maximum weight capacity.



### STARKIE STOOLS

- > Models offered with and without back in three heights: 18", 25" and 30".
- > Presented in Ash wood in all standard and custom finishes.
- > Seat pad features suspension support for optimum comfort.
- > Footring offered in Chrome only.
- > 250 lbs. maximum weight capacity.



# STOOL SEATING

## APPROVED PRODUCT

THRIVE  
BAR



### UPWARD STOOLS

- > Low and mid-back models.
- > One-piece shell available in White Oak, Walnut and Beech.
- > Offered in all wood or with an upholstered seat cushion.
- > Metal frame available in standard and premium finish selections.
- > 350 lb. maximum weight capacity.



### WORKSMITH STOOLS

- > Offered in two heights: 18"-24" and 24" - 30", with or without back.
- > Rotate seat to raise or lower to desired height.
- > Available with optional upholstered seat pad.
- > Footring is positioned 11-3/4" from the floor and features textured matte black finish.

# TABLES

## APPROVED PRODUCT

THRIVE  
BAR



### AVELINA MEETING TABLES

- > Available in custom 32" table height for ADA compliance, in addition to 42" height.
- > Depth options include: 20", 30", 36" and 42".
- > Offered in Maple, Walnut and White Oak veneer as well as laminate, Corian® and Formica Colorcore® finish options.
- > Panel bases feature adjustable glides as standard for leveling purposes.
- > End panel bases, center panel bases and underside of tables feature removable panels for wire management accessibility.
- > Select technology options for top surface and/or side-mount placement available on all sizes.



### DELEN MEETING TABLES

- > Table tops manufactured in Ash and Walnut wood species.
- > Two table heights offered: 29" and 42" 1½" top thickness for round and rectangle tables, and 1¼" for wall-mount and sidebar tables.
- > Plank-style available on sidebar and rectangle tables.
- > Solid wood, veneer and laminate options.
- > Veneer direction will run lengthwise on all rectangle tables 96" and under.
- > Available in standard Ash and Walnut wood finishes.
- > Laminate tops available in all Arcadia standard laminates.
- > Table bases manufactured in solid Ash wood and feature metal accent detail.
- > Accompanying benches manufactured in Ash and Walnut wood species and feature metal accent detail on leg interior.

# TABLES

## APPROVED PRODUCT

THRIVE  
BAR



### FLIRT® MEETING TABLES

- > Round and arc square top shapes offered in Maple, Walnut and White Oak veneer as well as laminate, Corian® and back-painted glass.
- > Metal base manufactured in aluminum and offered in standard as well as premium finish selections.
- > Base design facilitates wire management for through-the-surface electrical and/or data capability.



### HUSH MEETING TABLES

- > Available in round, convex/convex square and convex/convex rectangle top shapes.
- > Offered in 29" and 39" table heights. Custom height options between 29" - 39" also available.
- > All standard and custom wood finishes available on Beech as well as laminate selections.
- > Base available in Metallic Silver, Charcoal Grey, Chrome and Satin Black finishes as well as premium selections.
- > Bases feature adjustable black glides.

# TABLES

## APPROVED PRODUCT

THRIVE  
BAR



### NIOS® MEETING TABLES

- > Round, arc square and arc rectangle tables manufactured in three heights: 26", 29" and 42".
- > Custom height options between 26" - 42" also available.
- > Tables manufactured in Maple, Walnut and White Oak.
- > Tops available in all standard and custom wood finishes as well as laminate, Corian® and back-painted glass selections.
- > Metal pedestal base facilitates through-the-surface power capability and features adjustable glides.
- > Standard and premium base finish options.
- > Various power units available to address specific electrical and/or data preferences.
- > Accompanying lounge, bench and guest seating offered as well as occasional tables.



### VERO MEETING TABLES

- > Round, square, rectilinear and rectangle top shape options offered in three heights: 27", 29" and 42".
- > Available in Maple, Walnut and White Oak wood veneer as well as laminate and Corian® selections.
- > Signature metal base available in standard and premium finishes.
- > Standard finishes include Polished Aluminum, Metallic Silver, Metallic Champagne and Charcoal Grey.
- > Base design facilitates wire management for through-the-surface power capability.
- > Various power units available to address specific electrical and/or data preferences.

# TABLES

## APPROVED PRODUCT

THRIVE  
BAR



### WORKSMITH MEETING TABLES

- > Offered in three heights: 26", 29" and 42" (varies with top size).
- > Solid Ash wood or cast metal leg options.
- > Cast metal legs offered on 29" and 42" table heights only and feature textured matte black finish.
- > Planked tops available in Ash solid wood as well as veneer and laminate options.
- > Non-planked tops available in veneer, laminate and clear glass (select sizes).
- > Various power units available to address specific electrical and/or data preferences.
- > Accompanying easels and a mobile cart also offered.

### LOUNGE + MODULAR SEATING



ACHELLA LOUNGE  
& MODULAR



ALOFT LOUNGE



CO-OP LOUNGE



DOMO LOUNGE  
& MODULAR



FLIRT® LOUNGE



HAVEN LOUNGE



HUDDLE LOUNGE



HUSH LOUNGE  
& MODULAR



INTIMA LOUNGE  
& MODULAR



KINDRED LOUNGE



LEAF LOUNGE  
& MODULAR



NIOS® LOUNGE

# ARCADIA + KAISER

## APPROVED PRODUCT INDEX

STAY AND  
LINGER

### LOUNGE + MODULAR SEATING (CONT.)



OVATE® LOUNGE



SAVINA LOUNGE  
& MODULAR



SCENERY



SERAFINA LOUNGE  
& MODULAR



SOLEIL LOUNGE



UPTOWN SOCIAL  
LOUNGE & MODULAR

# ARCADIA + KAISER

## APPROVED PRODUCT INDEX

STAY AND  
LINGER

### GUEST SEATING



FLIRT® GUEST



HAVEN GUEST



KINDRED GUEST



NIOS® GUEST



REPRISE GUEST  
& TANDEM



SIGN GUEST



SOLEIL GUEST  
& TANDEM

### STOOLS + BENCH SEATING



ALLSORTS



BRINK STOOLS



CHATTER STOOLS



LIVIA BENCHES



# ARCADIA + KAISER

## APPROVED PRODUCT INDEX

STAY AND  
LINGER

### STOOLS + BENCH SEATING (CONT'D)



RADIANT BENCHES



SAVINA BENCHES



STARKIE STOOLS



UPWARD STOOLS



WORKSMITH

### HIP/EASY ACCESS CHAIRS



HAVEN



REPRISE



SOLEIL

### TABLES



ACHELLA



ALOFT



AVELINA



BETWIXT



DELEN



FLIRT®



HAVEN



HUSH



KINDRED



NIOS®



OVATE®



REPRISE

# ARCADIA + KAISER

## APPROVED PRODUCT INDEX

STAY AND  
LINGER

### TABLES (CONT.)



SAVINA



SOLEIL



VERO



WORKSMITH

### CHILDREN'S FURNITURE



LEAFLETTE



SMALLSORTS

# LOUNGE + MODULAR

## APPROVED PRODUCT

STAY AND  
LINGER



### ACHELLA LOUNGE

- > Lounge, love seat and sofa models.
- > Standard base configuration includes Maple wood platform with fixed metal legs or casters.
- > Wood platform available in all standard and custom wood finishes on Maple.
- > Signature metal leg available in Polished Aluminum, Metallic Silver and Satin Black finish options.
- > Multi-functional accessories to include rotating tablet, cup holder and power units, available on select models.



### ACHELLA MODULAR

- > Arm and armless lounge chairs available individually or in modular combinations.
- > Two back heights: 29½" and 32½".
- > Lounge chair models: straight, 30-degree inside wedge and 30-degree outside wedge.
- > Table models: 12" and 22" wide straights, 30-degree narrow, 30-degree wide and 90-degree.
- > Bench models: 22" wide straight, 30-degree and 90-degree.
- > Signature metal leg available in three finishes.
- > Multi-functional accessories to include rotating tablet, stationary table-ette and power units available on select models.

# LOUNGE + MODULAR

## APPROVED PRODUCT

STAY AND  
LINGER



### ALOFT LOUNGE

- > Fully upholstered seat and back.
- > Available in Maple, Walnut and White Oak wood species with horizontal wood grain pattern.
- > Metal frame offered in Chrome, Metallic Silver and Satin Black.
- > Accompanying benches and occasional tables available.



### CO-OP LOUNGE

- > Collection includes public and private seating models - with and without canopy.
- > Stand-alone, wall-mount panel units and single units also available.
- > Integrated tables featured on select models, in multiple sizes and heights as applicable.
- > Public versions stand 43½" tall; private at 56¾" high and private with canopy at 88½" high.
- > Canopy available with or without overhead cut-Out detail.
- > Accent tier on select models available upholstered or in veneer or laminate for added functionality.
- > Accent tier, tables and shelf offered in Maple, Walnut and White Oak wood veneer in addition to laminate selections.
- > All units feature 2" high black plinth base.

# LOUNGE + MODULAR

## APPROVED PRODUCT

STAY AND  
LINGER



### DOMO LOUNGE

- > Arm and armless lounge, love seat and sofa models.
- > Swivel-base and mobile lounge chairs also offered.
- > Lounge chair swivel base features auto-return as standard.
- > Select models available individually or in modular combinations with 90-degree corner lounge units and connecting tables.
- > Optional rotating tablet available in veneer, laminate or Corian® finishes.



### DOMO MODULAR

- > Arm and armless lounge, love seat and sofa models as well as lounge/bench combinations.
- > Available individually or in modular combinations with 90-degree corner lounge units and connecting tables.
- > Corner, inline and end tables available in veneer, laminate and Corian®.
- > Seating units with arms and all tables available with optional accessories to include rotating tablets, power port, and ganging bracket.

## LOUNGE + MODULAR

### APPROVED PRODUCT

STAY AND  
LINGER



#### FLIRT® LOUNGE

- > Mid and high back models available with 4-leg or swivel base.
- > 4-leg base available with chrome casters or on glides.
- > Fixed seat or flip-up for infinite nesting capability.
- > Swivel base features auto-return as standard (fixed seat only).
- > Die-cast aluminum legs available in all standard and premium metal finishes.
- > Optional flip-up rotating tablet offered.
- > Tablet available in Maple, Walnut and White Oak veneer, as well as laminate selections.



#### HAVEN LOUNGE

- > Collection includes lounge, love seat and sofa models offered in two frame options: Beech hardwood or metal.
- > Metal frame offered in five standard powdercoat finishes as well as premium selections.
- > Models available with open, panel or upholstered arms featuring Beech wood, black urethane and Corian® arm cap options.
- > Arm rest on all units features finger-grip design for stability and is generously proportioned to offer greater support.
- > Tandem lounge units are reconfigurable and can be ordered in any combination and quantity.
- > All models standard with clean-out area between seat and back and wall-saver leg design.
- > Optional rotating tablet available on select models and is offered in Beech veneer, laminate and Corian options.
- > Casters, cup holder and side-mount power units also offered in addition to pull handle for moving ease.

# LOUNGE + MODULAR

## APPROVED PRODUCT

STAY AND  
LINGER



### HUDDLE LOUNGE

- > Lounge, love seat and sofa models.
- > 3" higher back offered on lounge models.
- > Two standard metal platform base configurations: casters or fixed wood legs.
- > Metal platform available in Metallic Silver and Satin Black finishes.
- > Wood legs available in all standard and custom finishes on Beech.
- > Mobile version available on lounge models only and features two locking casters in rear and two non-locking casters in front.
- > Multi-functional accessories to include rotating tablet and various power units available on select models.



### HUSH LOUNGE

- > Lounge, love seat and sofa models.
- > Polished Aluminum, Metallic Silver or Satin Black fixed leg finish options.
- > Multi-functional accessories to include rotating tablet, cup holder and side-mount power units available.



# LOUNGE + MODULAR

## APPROVED PRODUCT

STAY AND  
LINGER



### HUSH LOUNGE + MODULAR

- > Lounge chairs available in private (high back) and public (low back) models.
- > Private units measure 45.5" in height to provide conversation intimacy and a reduction in overall sounds.
- > Public and private models offered individually or in modular combinations with armless, right-end, left-end and corner lounge units.
- > Public units configurable with three sizes of connecting tables: 12" wide, 23" wide and quarter-round.
- > Optional accessories include cup-holder and power units.
- > Modular combinations connected with leg mounting bracket.



### INTIMA LOUNGE + MODULAR

- > Public (low back) and private (high back) modular seating collection comprised of quarter-round wedge, 45-degree, corner and three sizes of straight units.
- > Public units stand 31½" tall, or 41½" with headrest. Private units stand 41½" tall, or 51½" with headrest.
- > Metal leg available in standard and premium metal finish selections.
- > All models are free-standing with optional ganging connectors.
- > Accessories include a shelf, free standing pull-up table, bar-height stools, rotating tablet and power units.
- > Optional shelf, table and tablet available in Maple, Walnut, or White Oak finishes or in laminate.
- > Accompanying lounge seating is also available.

## LOUNGE + MODULAR

### APPROVED PRODUCT

STAY AND  
LINGER



#### KINDRED LOUNGE

- > Manufactured in Ash wood species.
- > Wood frame features radiused edges for smooth surface contact.
- > Available in all standard and custom wood finishes on Ash.
- > Non-skid glides available for hard-surface floors.



#### LEAF LOUNGE + MODULAR

- > Lounge and love seat models available with optional clean-out feature between seat and back for maintenance ease.
- > Enables seated comfort for individuals of virtually any size (750 lbs. for lounge chair and 1000 lbs. for love seat).
- > Connecting tables manufactured in Maple, Walnut and White Oak.
- > Tables available in veneer and laminate finishes as well as with a Corian® top.
- > Legs available in wood or metal, in a variety of finish options.
- > Mid-size modular bench system and children's version also offered.
- > Standard units, mid-size benches and children's models are all interchangeable.

## LOUNGE + MODULAR

### APPROVED PRODUCT

STAY AND  
LINGER



#### NIOS® LOUNGE

- > Mid and high back models available with swivel or sled base.
- > 4-prong swivel pedestal base manufactured in aluminum with auto-return feature as standard.
- > Sled base manufactured in ½" diameter steel rod and comes standard with clear glides.
- > Sled and swivel pedestal base available in standard and premium metal finish selections.
- > Wood legs offered in Beech, Walnut and White Oak, in all standard and custom wood finishes.
- > Metal accent featured between seat and back.
- > Optional under seat book rack features 3" height clearance.
- > Rotating tablet available in veneer, laminate and Corian®.



#### OVATE® LOUNGE

- > Arm and armless lounge, love seat and sofa models
- > Upholstered frame supports seat and back cushions with elegance and versatility.
- > Wood platform base with 7" height clearance available in Beech, Walnut and White Oak.
- > All standard and custom finishes available.

# LOUNGE + MODULAR

## APPROVED PRODUCT

STAY AND  
LINGER



### SAVINA LOUNGE + MODULAR

- > Lounge and love seat models.
- > End tables offered in veneer, laminate, and Corian®.
- > Fixed legs available in standard and premium metal finishes.
- > Non-skid glides for hard surface floors available.
- > Under-seat power units offered.
- > Accompanying tandem seating, benches and occasional tables complement lounge units.



### SCENERY MODULAR

- > Lounge, love seat and sofa models available individually as well as in modular configurations with corner units and benches.
- > Optional wood rail with solid wood edge available in two lengths and offered in Ash and Walnut.
- > Models with ledge feature along the exterior perimeter provide additional seating choices allowing multiple and varied interactions at once.
- > Die-cast metal leg available in polished aluminum as well as standard and premium finishes.
- > Power units available in various locations for optimum multi-functionality.

# LOUNGE + MODULAR

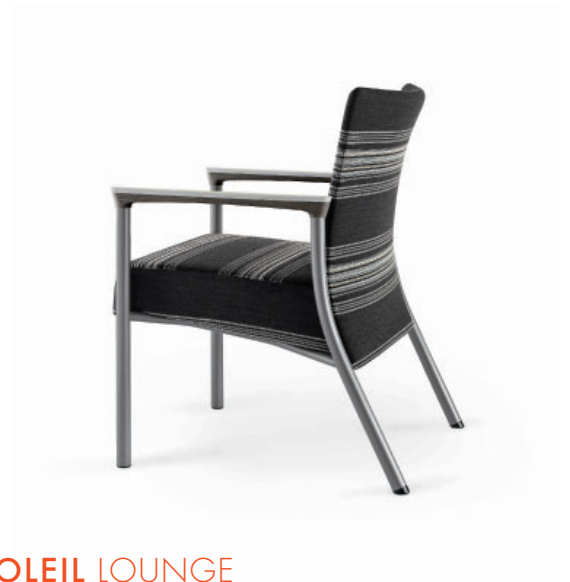
## APPROVED PRODUCT

STAY AND  
LINGER



### SERAFINA LOUNGE + MODULAR

- > Single, 2-seat and 3-seat armless units.
- > Connecting bridges available in six sizes: 6" wide straight, 20" wide straight, 30-degree, 45-degree, 60-degree and 90-degree.
- > Bridges available in veneer, laminate, upholstered, or in combination.
- > Corian® top option available.
- > Optional rotating tablet and power units available on individual chair units, seat end-units and specified connecting bridges.
- > Each seating unit comes standard with four concealed linking connectors.
- > Bridges come standard with four fixed linking receivers.
- > Linking connectors pivot outward from underneath chair to link with bridges.
- > All connecting bridges are interchangeable and reversible.



### SOLEIL LOUNGE

- > Metal frame available in five standard powdercoat finishes in addition to premium finish selections.
- > Wood, black urethane and Corian® arm cap options.
- > Wood arm caps available in Beech, Walnut and White Oak, in all standard and custom finishes.
- > Corian arm caps available in four standard colors.
- > Features passive flex back, clean-out on all sides including between seat and back, wall-saver leg design and replaceable componentry.

# LOUNGE + MODULAR

## APPROVED PRODUCT

STAY AND  
LINGER



### UPTOWN SOCIAL LOUNGE

- > Arm and armless lounge, love seat, sofa and chaise models.
- > 4" and 7" arm widths available on lounge, love seat and sofa models.
- > Chaise lounge available with 4" arm width only.
- > Optional arm cap offered in Walnut or White Oak, as well as Corian.
- > Optional wood trim is featured on all sides below the upholstered frame and is available in Walnut and White Oak.
- > Metal legs available in standard and premium finishes.
- > Power units available on front or side of arms.
- > Accompanying modular seating, benches, occasional tables and pillows also offered.



### UPTOWN SOCIAL MODULAR

- > Available in single, two-seat and three-seat combinations, as well as a two-seat with integrated center table, 30-degree and 60-degree models.
- > Optional 4" and 7" arms offered with or without arm cap.
- > Arm caps available in Walnut or White Oak, as well as Corian.
- > Optional wood trim is featured on all sides below the upholstered frame and is available in Walnut and White Oak.
- > Metal legs available in standard and premium finishes.
- > Power units available on front or side of arms.
- > Accompanying lounge seating, benches, occasional tables and pillows also offered.

## GUEST + TANDEM

### APPROVED PRODUCT

STAY AND  
LINGER



#### FLIRT® GUEST

- > 4-leg and swivel base models with fixed or flip-up seat options.
- > 4-leg base available with chrome casters or on glides.
- > Flip-up seat allows endless nesting capability for moving and storage ease.
- > Swivel base features auto-return as standard (fixed seat only).
- > Die-cast aluminum legs available in all standard and premium metal finishes.
- > Optional flip-up rotating tablet offered in Maple, Walnut and White Oak veneer, as well as laminate selections.



#### HAVEN GUEST

- > Guest, bariatric, hip/easy access and patient chair models available in two frame options: Beech hardwood or metal.
- > Metal frame offered in three standard finishes as well as premium selections.
- > Bariatric settee available in two sizes.
- > Clean-out area between seat and back.
- > Arm caps feature finger-grip design for stability and are generously proportioned to offer greater support.
- > Beech wood, Corian® and black urethane arm cap options available.
- > All standard and custom wood finishes available in addition to laminate and Corian selections.
- > Hip/easy access chair features 24½" seat height and brushed stainless steel foot step.

## GUEST + TANDEM

### APPROVED PRODUCT

STAY AND  
LINGER



#### KINDRED GUEST

- > Manufactured in Ash wood species.
- > Wood frame features radiused edges for smooth surface contact.
- > Available in all standard and custom wood finishes on Ash.
- > Non-skid glides available for hard-surface floors.



#### NIOS® GUEST

- > Arm and armless models available with wood or metal legs as well as on a swivel pedestal base.
- > Tubular metal arm features black leather arm caps as standard.
- > Wood legs offered in Beech, Walnut and White Oak, in all standard and custom wood finishes.
- > Swivel base presented with auto-return feature.
- > Standard and premium finishes available on arms and metal base styles.



## GUEST + TANDEM

### APPROVED PRODUCT

STAY AND  
LINGER



#### REPRISE GUEST + TANDEM

- > Tandem units available with two and three-seat combinations or as reconfigurable modular units.
- > Two frame options: Beech hardwood or metal.
- > Metal frame offered in three standard finishes as well as premium selections.
- > Bariatric settee available in two sizes.
- > Clean-outs on every side, including between seat and back.
- > Features wall-saver leg design, radiused edges for smooth surface contact, and replaceable componentry.
- > Beech wood, Corian® and black or grey urethane arm cap options available.
- > 15" and 22" wide in-line tables available in Beech veneer, laminate or with a Corian top.



#### SIGN GUEST

- > Rectangular steel cantilever frame available in two finishes: Metallic Silver or Chrome.
- > Fully upholstered seat and back.
- > Wood and black urethane arm cap options.
- > Wood arm caps available in all standard and custom finishes on Beech.

## GUEST + TANDEM

### APPROVED PRODUCT

STAY AND  
LINGER



### SOLEIL GUEST + TANDEM

- > Available in 2-4 seat pre-configured tandem units as well as reconfigurable modular units with bariatric seat sizes.
- > Wood, black urethane and Corian® arm cap options.
- > Wood arm caps available in Beech, Walnut and White Oak, in all standard and custom wood finishes.
- > Corian arm caps available in four standard colors.
- > Metal frame available in five standard powdercoat finishes in addition to premium color selections.
- > All models feature passive flex back, clean-out on all sides including between seat and back, wall-saver leg design and replaceable componentry.
- > End, in-line and corner tables for modular configurations manufactured in Beech, Walnut and White Oak.

# STOOLS + BENCHES

## APPROVED PRODUCT

STAY AND  
LINGER



### ALLSORTS BENCHES

- > Models offered with or without backs, in addition to table options.
- > Features Ash wood platform with solid wood edge.
- > Leg finish offered in Matte Black as standard as well as premium finish selections.
- > Under-seat power units for seating units and power bands for table placement.



### BRINK STOOLS

- > Available in Beech, Walnut and White Oak, in all standard and custom finishes.
- > All wood, or wood with upholstered seat pad.
- > Counter and bar height models.
- > Maximum weight capacity of 350 lbs.
- > Metal frame available in standard and premium finishes.

# STOOLS + BENCHES

## APPROVED PRODUCT

STAY AND  
LINGER



### CHATTER STOOLS

- > Available in Beech, Walnut and White Oak, in all standard and custom finishes.
- > All wood, wood with upholstered seat, or wood with upholstered seat and back options.
- > Counter and bar height models.
- > Maximum weight capacity of 275 lbs.
- > Metal footring offered in Chrome only.



### LIVIA BENCHES

- > Straight and scalloped benches available in Maple, Walnut and White Oak.
- > Metal frame and spacers available in standard and premium finish selections.
- > Optional upholstered seat pad offered on straight benches only.

# STOOLS + BENCHES

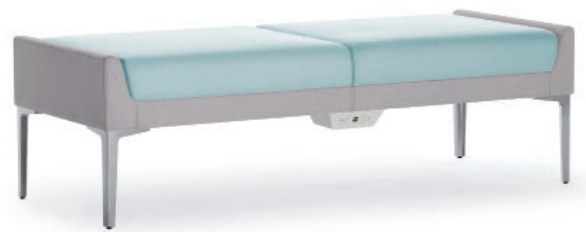
## APPROVED PRODUCT

STAY AND  
LINGER



### RADIANT BENCHES

- > Benches manufactured in Maple, Walnut and White Oak wood species.
- > Available in two and three-seat models.
- > Features inset seat cushions with suspension support for optimal comfort.
- > Metal frame available in standard and premium color selections.
- > Standard finishes include: #06 Charcoal Grey, #90 Metallic Silver and #92 Polished Aluminum.



### SAVINA BENCHES

- > Offered in two and three seat models.
- > Die-cast aluminum legs available in standard and premium metal finishes and feature adjustable glides.
- > Under-seat power unit option available in Metallic Silver or White finish.

# STOOLS + BENCHES

## APPROVED PRODUCT

STAY AND  
LINGER



### STARKIE STOOLS

- > Models offered with and without back in three heights: 18", 25" and 30".
- > Presented in Ash wood in all standard and custom finishes.
- > Seat pad features suspension support for optimum comfort.
- > Footring offered in Chrome only.
- > 250 lbs. maximum weight capacity.



### UPWARD STOOLS

- > Low and mid-back models.
- > One-piece shell available in White Oak, Walnut and Beech.
- > Offered in all wood or with an upholstered seat cushion.
- > Metal frame available in standard and premium finish selections.

# STOOLS + BENCHES HIP/EASY ACCESS CHAIRS

APPROVED PRODUCT



## WORKSMITH STOOLS

- > Offered in two heights: 18"-24" and 24" - 30", with or without back.
- > Rotate seat to raise or lower to desired height.
- > Available with optional upholstered seat pad.
- > Footring is positioned 11-3/4" from the floor and features textured matte black finish.



## HAVEN HIP/EASY ACCESS CHAIR

- > Hip and patient chair models available in two frame options: Beech hardwood or metal.
- > Metal frame offered in five standard powdercoat finishes as well as premium selections.
- > Clean-out area between seat and back.
- > Arm caps feature finger-grip design for stability and are generously proportioned to offer greater support.
- > Beech wood, Corian® and black urethane arm cap options available.
- > All standard and custom wood finishes available in addition to laminate and Corian selections.
- > Hip chair features 24½" seat height and a non-skid foot step.

STAY AND  
LINGER

## HIP/EASY ACCESS CHAIRS

### APPROVED PRODUCT

STAY AND  
LINGER



#### SOLEIL HIP/EASY ACCESS CHAIR

- > Hip/easy access and patient chair models available.
- > Metal frame available in five standard powdercoat finishes in addition to premium finish selections.
- > Wood, black urethane and Corian® arm cap options.
- > Wood arm caps available in Beech, Walnut and White Oak, in all standard and custom finishes.
- > Corian arm caps available in four standard colors.
- > Bariatric models accommodate up to 750 lbs. and are available in two sizes.
- > All models feature passive flex back, clean-out on all sides including between seat and back, wall-saver leg design and replaceable componentry.



#### REPRISE HIP/EASY ACCESS CHAIR

- > Hip/easy access and patient chair models available in two frame options: Beech hardwood or metal.
- > Metal frame offered in three standard finishes as well as premium selections.
- > Clean-outs on every side, including between seat and back.
- > Beech wood, Corian® and black or grey urethane arm cap options available.
- > Hip chair features 25" seat height and brushed stainless steel foot step.



## TABLES

### APPROVED PRODUCT

STAY AND  
LINGER



#### ACHELLA TABLES

- > Round, square and rectangle table shape options.
- > Available in multiple sizes as well as custom dimension options.
- > Veneer, laminate or Corian® finish selections. Signature metal legs available in three finishes.



#### ALOFT TABLES

- > Manufactured in Maple, Walnut and White Oak.
- > Available in four standard sizes.
- > Top is ½" clear glass with eased edge.
- > 48" length table features center divider.
- > Metal frame available in Chrome, Metallic Silver and Satin Black.

# TABLES

## APPROVED PRODUCT

STAY AND  
LINGER



### AVELINA TABLES

- > Available in custom 32" table height for ADA compliance, in addition to 42" height.
- > Depth options include: 20", 30", 36" and 42".
- > Offered in Maple, Walnut and White Oak veneer as well as laminate, Corian® and Formica Colorcore® finish options.
- > Panel bases feature adjustable glides as standard for leveling purposes.
- > End panel bases, center panel bases and underside of tables feature removable panels for wire management accessibility.
- > Select technology options for top surface and/or side-mount placement available on all sizes.



### BETWIXT TABLES

- > Occasional tables with wire-rod metal base.
- > Offered in three diameters: 19", 29" and 36".
- > Table top surface available in Ash and Walnut wood veneer as well as laminate, Corian and back-painted glass selections.
- > Metal base offered in standard and premium finishes.

# TABLES

## APPROVED PRODUCT

STAY AND  
LINGER



### DELEN MEETING TABLES

- > Table tops manufactured in Ash and Walnut wood species.
- > Two table heights offered: 29" and 42" 1 1/2" top thickness for round and rectangle tables, and 1 1/4" for wall-mount and sidebar tables.
- > Plank-style available on sidebar and rectangle tables.
- > Solid wood, veneer and laminate options.
- > Veneer direction will run lengthwise on all rectangle tables 96" and under.
- > Available in standard Ash and Walnut wood finishes.
- > Laminate tops available in all Arcadia standard laminates.
- > Table bases manufactured in solid Ash wood and feature metal accent detail.
- > Accompanying benches manufactured in Ash and Walnut wood species and feature metal accent detail on leg interior.



### FLIRT® TABLES

- > Round and arc square top shapes offered in Maple, Walnut and White Oak veneer as well as laminate, Corian® and back-painted glass.
- > Metal base manufactured in aluminum and offered in standard as well as premium finish selections.
- > Base design facilitates wire management for through-the-surface electrical and/or data capabilities.

# TABLES

## APPROVED PRODUCT

STAY AND  
LINGER



### HAVEN TABLES

- > Round, square and rectangle table shapes.
- > Multiple sizes available as well as custom dimension options.
- > Beech wood veneer and laminate.
- > All standard and custom wood finishes available.



### HUSH TABLES

- > Available in round, convex/convex square and convex/convex rectangle top shapes.
- > Offered in 29" and 39" table heights. Custom height options between 29" - 39" also available.
- > All standard and custom wood finishes available on Beech as well as laminate selections.
- > Base available in Charcoal Grey, Metallic Silver, Chrome and Satin Black finishes as well as premium selections.
- > Bases feature adjustable black glides.

# TABLES

## APPROVED PRODUCT

STAY AND  
LINGER



### KINDRED TABLES

- > Round, square, and rectangle top shapes.
- > Manufactured in Ash wood species.
- > Wood veneer, laminate and Corian table top selections.



### NIOS® TABLES

- > Round, arc square and arc rectangle top shapes.
- > Offered in 15" height.
- > Custom height options below 15" also available.
- > Four table surface options: veneer, laminate, Corian® and back-painted glass.
- > Veneer offered in Maple, White Oak and Walnut.
- > Metal base manufactured in aluminum and offered in standard as well as premium finish selections.
- > Base design facilitates wire management for through-the-surface electrical and/or data capabilities.

# TABLES

## APPROVED PRODUCT

STAY AND  
LINGER



### OVATE® TABLES

- > Tables manufactured in Beech, Walnut and White Oak.
- > Round, oval, square and rectangle shapes available in a variety of sizes.
- > All standard and custom wood finishes available as well as laminate and Corian® selections.
- > All tables feature wood platform base with 7" height clearance.
- > Accompanying lounge and bench seating available.



### REPRISE TABLES

- > Round, square, and rectangle top shape options offered 20" height.
- > Manufactured in Beech wood species.
- > Table top surface available in wood veneer as well as laminate and Corian.
- > Accompanying guest and tandem seating units also offered.

# TABLES

## APPROVED PRODUCT

STAY AND  
LINGER



### SAVINA TABLES

- > Round and racetrack shapes with floating top design detail.
- > Tops available in Ash veneer as well as laminate, Corian® and back-painted glass.
- > All standard and custom wood finishes available.
- > Corian top available in four standard colors.
- > Back-painted glass available in #94 Cotton and can be used as a writable surface with dry-erase markers.
- > Accompanying lounge seating, modular seating and benches.



### SOLEIL TABLES

- > Available in round, triangle and ellipse shapes, in a variety of sizes.
- > Tables manufactured in Beech, Walnut and White Oak.
- > Available in all standard and custom wood finishes.
- > Laminate and Corian® top surface options also offered.
- > Metallic Silver, Satin Black, Chrome or Wood fixed leg options.
- > Premium metal leg finishes also offered.
- > Accompanying guest, tandem and lounge seating available.

# TABLES

## APPROVED PRODUCT

STAY AND  
LINGER



### VERO TABLES

- > Round, square, rectilinear and rectangle top shape options offered in three heights: 27", 29" and 42".
- > Available in Maple, Walnut and White Oak wood veneer as well as laminate and Corian® selections.
- > Signature metal base available in standard and premium finishes.
- > Standard finishes include Polished Aluminum, Metallic Silver and Charcoal Grey.
- > Base design facilitates wire management for through-the-surface power capability.
- > Various power units available to address specific electrical and/or data preferences.



### WORKSMITH TABLES

- > Offered in three heights: 26", 29" and 42" (varies with top size).
- > Solid Ash wood or cast metal leg options.
- > Cast metal legs offered on 29" and 42" table heights only and feature textured matte black finish.
- > Planked tops available in Ash solid wood as well as veneer and laminate options.
- > Non-planked tops available in veneer, laminate and clear glass (select sizes).
- > Various power units available to address specific electrical and/or data preferences.
- > Accompanying easels and a mobile cart also offered.



# CHILDREN'S FURNITURE

## APPROVED PRODUCT

STAY AND  
LINGER



### LEAFLETTE COLLECTION

- > Children's lounge units feature leaf-inspired shape to enable seated comfort in any direction.
- > Benches offered in three shapes and can be configured with lounge chairs, tables and benches.
- > Buds benches feature plinth base and are available individually in four shapes for stand-alone requirements or joined together in modular combinations with other Bud units.
- > Connecting table available in five sizes to create straight or curved configurations.
- > Tables join together with all Leaflette lounge and bench models as well as their adult counterparts.



### SMALLSORTS COLLECTION

- > Children's bench seats available with or without back.
- > Metal legs finished in Matte Black as standard, with premium colors also offered.
- > Under-seat USB chargers optional.
- > Accompanying adult version available.

# ARCADIA + KAISER

## APPROVED PRODUCT INDEX

COMM  
UNITY

### GUEST SEATING



FLIRT®



HAVEN



KINDRED



NIOS®



REPRISE



SIGN



SOLEIL

### TABLES



AVELINA



DELEN



FLIRT®



WORKSMITH

### WHITEBOARDS



FLIRT® DIVIDER



FLIRT® M.A.T.E.



WORKSMITH EASEL

# GUEST SEATING

## APPROVED PRODUCT

COMM  
UNITY



### FLIRT® GUEST

- > 4-leg and swivel base models with fixed or flip-up seat options.
- > 4-leg base available with chrome casters or on glides.
- > Flip-up seat allows endless nesting capability for moving and storage ease.
- > Swivel base features auto-return as standard (fixed seat only).
- > Die-cast aluminum legs available in all standard and premium metal finishes.
- > Optional flip-up rotating tablet offered in Maple, Walnut and White Oak veneer, as well as laminate selections.



### HAVEN GUEST

- > Guest, bariatric, hip/easy access and patient chair models available in two frame options: Beech hardwood or metal.
- > Metal frame offered in five standard powdercoat finishes as well as premium selections.
- > Bariatric settee available in two sizes.
- > Clean-out area between seat and back.
- > Arm caps feature finger-grip design for stability and are generously proportioned to offer greater support.
- > Beech wood, Corian® and black urethane arm cap options available.
- > All standard and custom wood finishes available in addition to laminate and Corian selections.
- > Hip/easy access chair features 24½" seat height and brushed stainless steel foot rest.

# GUEST SEATING

## APPROVED PRODUCT

COMM  
UNITY



### KINDRED GUEST

- > Manufactured in Ash wood species.
- > Wood frame features radiused edges for smooth surface contact.
- > Available in all standard and custom wood finishes on Ash.
- > Non-skid glides available for hard-surface floors.



### NIOS® GUEST

- > Arm and armless models available with wood or metal legs as well as on a swivel pedestal base.
- > Tubular metal arm features black leather arm caps as standard.
- > Wood legs offered in Beech, Walnut and White Oak, in all standard and custom wood finishes.
- > Swivel base presented with auto-return feature.
- > Standard and premium finishes available on arms and metal base styles.
- > Non-skid glides for hard-surface floors offered on all models.

# GUEST SEATING

## APPROVED PRODUCT

COMM  
UNITY



### REPRISE GUEST

- > Guest, bariatric, hip/easy access and patient chair models available in two frame options: Beech hardwood or metal.
- > Metal frame offered in three standard finishes as well as premium selections.
- > Bariatric settee available in two sizes.
- > Clean-outs on every side, including between seat and back.
- > Features wall-saver leg design, radiused edges for smooth surface contact, and replaceable componentry.
- > Beech wood, Corian® and black or grey urethane arm cap options available.
- > All standard and custom wood finishes available in addition to laminate and Corian selections.
- > Hip/easy access chair features 24½" seat height and brushed stainless steel foot rest.



### SIGN GUEST

- > Rectangular steel cantilever frame available in two finishes: Metallic Silver or Chrome.
- > Fully upholstered seat and back.
- > Wood and black urethane arm cap options.
- > Wood arm caps available in all standard and custom finishes on Beech.
- > Black glides standard.

# GUEST SEATING

## APPROVED PRODUCT

COMM  
UNITY



### SOLEIL GUEST

- > Guest, bariatric, patient and hip/easy access chair models available.
- > Metal frame available in five standard powdercoat finishes in addition to premium finish selections.
- > Wood, black urethane and Corian® arm cap options.
- > Wood arm caps available in Beech, Walnut and White Oak, in all standard and custom finishes.
- > Corian arm caps available in four standard colors.
- > Bariatric models accommodate up to 750 lbs. and are available in two sizes.
- > All models feature passive flex back, clean-out on all sides including between seat and back, wall-saver leg design and replaceable componentry.
- > Accompanying tandem and lounge seating as well as occasional tables offered.

# TABLES

## APPROVED PRODUCT

COMM  
UNITY



### AVELINA MEETING TABLES

- > Available in custom 32" table height for ADA compliance, in addition to 42" height.
- > Depth options include: 20", 30", 36" and 42".
- > Offered in Maple, Walnut and White Oak veneer as well as laminate, Corian® and Formica Colorcore® finish options.
- > Panel bases feature adjustable glides as standard for leveling purposes.
- > End panel bases, center panel bases and underside of tables feature removable panels for wire management accessibility.
- > Select technology options for top surface and/or side-mount placement available on all sizes.



### DELEN MEETING TABLES

- > Table tops manufactured in Ash and Walnut wood species.
- > Three table heights offered: 29" and 42" 1 1/2" top thickness for round and rectangle tables, and 1 1/4" for wall-mount and sidebar tables.
- > Plank-style available on sidebar and rectangle tables.
- > Solid wood, veneer and laminate options.
- > Veneer direction will run lengthwise on all rectangle tables 96" and under.
- > Available in standard Ash and Walnut wood finishes.
- > Laminate tops available in all Arcadia standard laminates.
- > Table bases manufactured in solid Ash wood and feature metal accent detail.
- > Accompanying benches manufactured in Ash and Walnut wood species and feature metal accent detail on leg interior.



# TABLES

## APPROVED PRODUCT

COMM  
UNITY



### FLIRT® TRAINING TABLES

- > Fixed and flip-up tables manufactured in Maple, Walnut and White Oak veneer as well as laminate selections.
- > Half-round, rectangle and trapezoid table shapes available in 27", 29" and 42" heights.
- > Flip-up tables feature single-lever release mechanism for quick and easy set-up and storage.
- > Reconfigurable and offered with optional ganging mechanism for more permanent connections.
- > Corner and end connecting tables, modesty panels and various power/data technology units also available.
- > Die-cast aluminum legs, with locking casters or glides, available in all standard and premium metal finishes.
- > Interior leg column features removable panel for vertical wire management.



### WORKSMITH TABLES

- > Offered in three heights: 26", 29" and 42" (varies with top size).
- > Solid Ash wood or cast metal leg options.
- > Cast metal legs offered on 29" and 42" table heights only and feature textured matte black finish.
- > Planked tops available in Ash solid wood as well as veneer and laminate options.
- > Non-planked tops available in veneer, laminate and clear glass (select sizes).
- > Various power units available to address specific electrical and/or data preferences.
- > Accompanying easels and a mobile cart also offered.

# WHITEBOARDS

## APPROVED PRODUCT

COMM  
UNITY



### FLIRT® DIVIDER

- > Available in two widths with overall height of 71".
- > Material options for easel and divider screen include Maple, White Oak and Walnut veneer, laminate, upholstered with tackable surface or whiteboard, in any combination.
- > Die-cast aluminum legs feature four locking casters.
- > Monitor-ready mounting and power unit options available.



### FLIRT® M.A.T.E. EASEL

- > Offered in 54" and 63" widths, with overall height of 71" and comes standard with side-mount valet table.
- > Material options for easel include Maple, White Oak and Walnut veneer, laminate, upholstered with tackable surface or whiteboard, in any combination.
- > Whiteboard options include storage slot for markers, erasers, and remotes.
- > Two non-removable pull-out whiteboards, conveniently hidden inside the unit, available for additional writing surface requirements.
- > Valet table offered in Maple, Walnut and White Oak veneer as well as laminate selections.
- > Side-mount power unit and monitor-ready mounting options offered.
- > Die-cast aluminum legs feature four locking casters.

# WHITEBOARDS

## APPROVED PRODUCT



### WORKSMITH EASEL

- > Vertical and horizontal positioning available.
- > Wood frame manufactured in Ash wood species and features integrated channel for storing markers, pushpins, magnets and similar accessories.
- > Material options included whiteboard, upholstered with tackable surface or magnetic glass, in any combination.
- > Magnetic glass is back-painted white and may be used as a writable surface with dry-erase markers.
- > Metal base features textured black finish and four locking casters.

### GUEST SEATING



FLIRT®



HAVEN



KINDRED



NIOS®



REPRISE



SIGN



SOLEIL

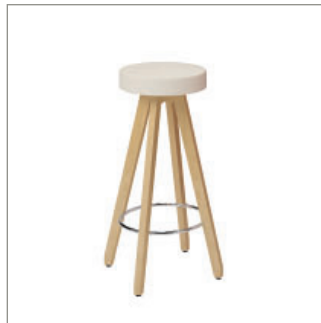
### STOOL SEATING



BRINK



CHATTER



INTIMA



STARKIE

### STOOL SEATING (CONT.)



UPWARD



WORKSMITH

### TABLES



AVELINA



DELEN



FLIRT®



NIOS®



VERO



WORKSMITH

# ARCADIA + KAISER

## APPROVED PRODUCT INDEX

REFRESH

### CHILDREN'S FURNITURE



LEAFLETTE



SMALLSORTS

# GUEST SEATING

## APPROVED PRODUCT

REFRESH



### FLIRT® GUEST

- > 4-leg and swivel base models with fixed or flip-up seat options.
- > 4-leg base available with chrome casters or on glides.
- > Flip-up seat allows endless nesting capability for moving and storage ease.
- > Swivel base features auto-return as standard (fixed seat only).
- > Die-cast aluminum legs available in all standard and premium metal finishes.
- > Optional flip-up rotating tablet offered in Maple, Walnut and White Oak veneer, as well as laminate selections.



### HAVEN GUEST

- > Guest, bariatric, hip/easy access and patient chair models available in two frame options: Beech hardwood or metal.
- > Metal frame offered in five standard powdercoat finishes as well as premium selections.
- > Bariatric settee available in two sizes.
- > Clean-out area between seat and back.
- > Arm caps feature finger-grip design for stability and are generously proportioned to offer greater support.
- > Beech wood, Corian® and black urethane arm cap options available.
- > All standard and custom wood finishes available in addition to laminate and Corian selections.
- > Hip chair features 24½" seat height and brushed stainless steel foot step.

# GUEST SEATING

## APPROVED PRODUCT

REFRESH



### KINDRED GUEST

- > Manufactured in Ash wood species.
- > Wood frame features radiused edges for smooth surface contact.
- > Available in all standard and custom wood finishes on Ash.
- > Non-skid glides available for hard-surface floors.



### NIOS® GUEST

- > Arm and armless models available with wood or metal legs as well as on a swivel pedestal base.
- > Tubular metal arm features black leather arm caps as standard.
- > Wood legs offered in Beech, Walnut and White Oak, in all standard and custom wood finishes.
- > Swivel base presented with auto-return feature.
- > Standard and premium finishes available on arms and metal base styles.
- > Non-skid glides for hard-surface floors offered on all models.



# GUEST SEATING

## APPROVED PRODUCT

REFRESH



### REPRISE GUEST

- > Guest, bariatric, hip/easy access and patient chair models available in two frame options: Beech hardwood or metal.
- > Metal frame offered in three standard finishes as well as premium selections.
- > Bariatric settee available in two sizes.
- > Clean-outs on every side, including between seat and back.
- > Features wall-saver leg design, radiused edges for smooth surface contact, and replaceable componentry.
- > Beech wood, Corian® and black or grey urethane arm cap options available.
- > All standard and custom wood finishes available in addition to laminate and Corian selections.
- > Hip chair features 24½" seat height and brushed stainless steel foot step.



### SIGN GUEST

- > Rectangular steel cantilever frame available in two finishes: Metallic Silver or Chrome.
- > Fully upholstered seat and back.
- > Wood and black urethane arm cap options.
- > Wood arm caps available in all standard and custom finishes on Beech.
- > Black glides standard.

# GUEST SEATING

## APPROVED PRODUCT

REFRESH



### SOLEIL GUEST

- > Guest, bariatric, patient and hip/easy access chair models available.
- > Metal frame available in five standard powdercoat finishes in addition to premium finish selections.
- > Wood, black urethane and Corian® arm cap options.
- > Wood arm caps available in Beech, Walnut and White Oak, in all standard and custom finishes.
- > Corian arm caps available in four standard colors.
- > Bariatric models accommodate up to 750 lbs. and are available in two sizes.
- > All models feature passive flex back, clean-out on all sides including between seat and back, wall-saver leg design and replaceable componentry.
- > Accompanying tandem and lounge seating as well as occasional tables offered.

# STOOL SEATING

## APPROVED PRODUCT

REFRESH



### BRINK STOOLS

- > Available in Beech, Walnut and White Oak, in all standard and custom finishes.
- > All wood, or wood with upholstered seat pad.
- > Counter and bar height models.
- > Maximum weight capacity of 350 lbs.
- > Metal frame available in standard and premium finishes.



### CHATTER STOOLS

- > Available in Beech, Walnut and White Oak, in all standard and custom finishes.
- > All wood, wood with upholstered seat or wood with upholstered seat and back options.
- > Counter and bar height models.
- > Maximum weight capacity of 275 lbs.
- > Metal footring offered in Chrome only.

# STOOL SEATING

## APPROVED PRODUCT

REFRESH



### INTIMA STOOLS

- > Bar height stools manufactured in Beech.
- > Offered with upholstered seat and features chrome footring.
- > All standard and custom finishes available.



### STARKIE STOOLS

- > Models offered with and without back in three heights: 18", 25" and 30".
- > Presented in Ash wood in all standard and custom finishes.
- > Seat pad features suspension support for optimum comfort.
- > Footring offered in Chrome only.

# STOOL SEATING

## APPROVED PRODUCT

REFRESH



### UPWARD STOOLS

- > Low and mid-back models.
- > One-piece shell available in White Oak, Walnut and Beech.
- > Offered in all wood or with an upholstered seat cushion.
- > Metal frame available in standard and premium finish selections.
- > 350 lb. maximum weight capacity.



### WORKSMITH STOOLS

- > Offered in two heights: 18"-24" and 24" - 30", with or without back.
- > Rotate seat to raise or lower to desired height.
- > Available with optional upholstered seat pad.
- > Footring is positioned 11-3/4" from the floor and features textured matte black finish.

# TABLES

## APPROVED PRODUCT

REFRESH



### AVELINA TABLES

- > Available in custom 32" table height for ADA compliance, in addition to 42" height.
- > Depth options include: 20", 30", 36" and 42".
- > Offered in Maple, Walnut and White Oak veneer as well as laminate, Corian® and Formica Colorcore® finish options.
- > Panel bases feature adjustable glides as standard for leveling purposes.
- > End panel bases, center panel bases and underside of tables feature removable panels for wire management accessibility.
- > Select technology options for top surface and/or side-mount placement available on all sizes.



### DELEN MEETING TABLES

- > Table tops manufactured in Ash and Walnut wood species.
- > Three table heights offered: 29" and 42" 1 1/2" top thickness for round and rectangle tables, and 1 1/4" for wall-mount and sidebar tables.
- > Plank-style available on sidebar and rectangle tables.
- > Solid wood, veneer and laminate options.
- > Veneer direction will run lengthwise on all rectangle tables 96" and under.
- > Available in standard Ash and Walnut wood finishes.
- > Laminate tops available in all Arcadia standard laminates.
- > Table bases manufactured in solid Ash wood and feature metal accent detail.
- > Accompanying benches manufactured in Ash and Walnut wood species and feature metal accent detail on leg interior.

# TABLES

## APPROVED PRODUCT

REFRESH



### FLIRT® TABLES

- > Round and arc square top shapes offered in Maple, Walnut and White Oak veneer as well as laminate, Corian® and back-painted glass.
- > Metal base manufactured in aluminum and offered in standard as well as premium finish selections.
- > Base design facilitates wire management for through-the-surface electrical and/or data capability.



### NIOS® TABLES

- > Round, arc square and arc rectangle tables manufactured in three heights: 26", 29" and 42".
- > Custom height options between 26" - 42" also available.
- > Tables manufactured in Maple, Walnut and White Oak.
- > Tops available in all standard and custom wood finishes as well as laminate, Corian® and back-painted glass selections.
- > Metal pedestal base facilitates through-the-surface power capability and features adjustable glides.
- > Standard and premium base finish options.
- > Various power units available to address specific electrical and/or data preferences.

# TABLES

## APPROVED PRODUCT

REFRESH



### VERO TABLES

- > Round, square, rectilinear and rectangle top shape options offered in three heights: 27", 29" and 42".
- > Available in Maple, Walnut and White Oak wood veneer as well as laminate and Corian® selections.
- > Signature metal base available in standard and premium finishes.
- > Standard finishes include Polished Aluminum, Metallic Silver and Charcoal Grey.
- > Base design facilitates wire management for through-the-surface power capability.
- > Various power units available to address specific electrical and/or data preferences.



### WORKSMITH TABLES

- > Offered in three heights: 26", 29" and 42" (varies with top size).
- > Solid Ash wood or cast metal leg options.
- > Cast metal legs offered on 29" and 42" table heights only and feature textured matte black finish.
- > Planked tops available in Ash solid wood as well as veneer and laminate options.
- > Non-planked tops available in veneer, laminate and clear glass (select sizes).
- > Various power units available to address specific electrical and/or data preferences.
- > Accompanying easels and a mobile cart also offered.



# CHILDREN'S FURNITURE

## APPROVED PRODUCT

REFRESH



### LEAFLETTE COLLECTION

- > Children's lounge units feature leaf-inspired shape to enable seated comfort in any direction.
- > Benches offered in three shapes and can be configured with lounge chairs, tables and benches.
- > Buds benches feature plinth base and are available individually in four shapes for stand-alone requirements or joined together in modular combinations with other Bud units.
- > Connecting table available in five sizes to create straight or curved configurations.
- > Tables join together with all Leaflette lounge and bench models as well as their adult counterparts.



### SMALLSORTS COLLECTION

- > Children bench units available with or without backs.
- > Leg finish offered in Matte Black as standard as well as premium finish selections.
- > Under-seat USB charging units available.

# ARCADIA + KAISER

## APPROVED PRODUCT INDEX

ON  
STAGE

### LOUNGE SEATING



ALOFT



DOMO



FLIRT®



HAVEN



HUDDLE



INTIMA



KINDRED



NIOS®



OVATE®



SAVINA



SOLEIL



UPTOWN SOCIAL

# ARCADIA + KAISER

## APPROVED PRODUCT INDEX

ON  
STAGE

### GUEST SEATING



FLIRT®



HAVEN



KINDRED



NIOS®



SIGN



REPRISE



SOLEIL

### BENCH SEATING



ALLSORTS



LIVIA



RADIANT



SAVINA

### BARIATRIC SEATING



HAVEN



REPRISE



SOLEIL

### TABLES



ACHELLA



ALOFT



AVELINA



BETWIXT



FLIRT®



HAVEN



HUSH



KINDRED

### TABLES (CONT.)



NIOS®



OVATE®



VERO



REPRISE



SAVINA



SOLEIL

### CHILDREN'S FURNITURE



LEAFLETTE



SMALLSORTS

# LOUNGE SEATING

## APPROVED PRODUCT

ON  
STAGE



### ACHELLA LOUNGE

- > Lounge, love seat and sofa models.
- > Standard base configuration includes Maple wood platform with fixed metal legs or casters.
- > Wood platform available in all standard and custom wood finishes on Maple.
- > Signature metal leg available in Polished Aluminum, Metallic Silver and Satin Black finish options.
- > Multi-functional accessories to include rotating tablet, cup holder and power units, available on select models.



### ALOFT LOUNGE

- > Fully upholstered seat and back.
- > Available in Maple, Walnut and White Oak wood species with horizontal wood grain pattern.
- > Metal frame offered in Chrome, Metallic Silver and Satin Black.
- > Accompanying benches and occasional tables available.

# LOUNGE SEATING

## APPROVED PRODUCT

ON  
STAGE



### DOMO LOUNGE

- > Arm and armless lounge, love seat and sofa models
- > Swivel-base and mobile lounge chairs also offered.
- > Lounge chair swivel base features auto-return as standard.
- > Select models available individually or in modular combinations with 90-degree corner lounge units, connecting tables and benches.
- > Optional rotating tablet available in veneer, laminate or Corian® finishes.



### FLIRT® LOUNGE

- > Mid and high back models available with 4-leg or swivel base.
- > 4-leg base available with chrome casters or on glides.
- > Fixed seat or flip-up for infinite nesting capability.
- > Swivel base features auto-return as standard (fixed seat only).
- > Die-cast aluminum legs available in all standard and premium metal finishes.
- > Optional flip-up rotating tablet offered.
- > Tablet available in Maple, Walnut and White Oak veneer, as well as laminate selections.

# LOUNGE SEATING

## APPROVED PRODUCT

ON  
STAGE



### HAVEN LOUNGE

- > Collection includes lounge, love seat and sofa models offered in two frame options: Beech hardwood or metal.
- > Metal frame offered in five standard powdercoat finishes as well as premium selections.
- > Models available with open, panel or upholstered arms featuring Beech wood, black urethane and Corian® arm cap options.
- > Arm rest on all units features finger-grip design for stability and is generously proportioned to offer greater support.
- > Tandem lounge units are reconfigurable and can be ordered in any combination and quantity.
- > All models standard with clean-out area between seat and back and wall-saver leg design.
- > Optional rotating tablet available on select models and is offered in Beech veneer, laminate and Corian options.
- > Casters, cup holder and side-mount power units also offered in addition to pull handle for moving ease.



### HUDDLE LOUNGE

- > Lounge, love seat and sofa models.
- > 3" higher back offered on lounge models.
- > Two standard metal platform base configurations: casters or fixed wood legs.
- > Metal platform available in Metallic Silver and Satin Black finishes.
- > Wood legs available in all standard and custom finishes on Beech.
- > Mobile version available on lounge models only and features two locking casters in rear and two non-locking casters in front.
- > Multi-functional accessories to include rotating tablet and various power units available on select models.



# LOUNGE SEATING

## APPROVED PRODUCT

ON  
STAGE



### INTIMA LOUNGE

- > Arm and armless lounge, love seat and sofa models.
- > Lounge models offered in two sizes, 29" standard or narrower 26".
- > Metal leg available in standard and premium metal finish selections.
- > Multi-functional accessories include rotating tablet, casters, cup holder, pull handle and side-mount power units.



### KINDRED LOUNGE

- > Manufactured in Ash wood species.
- > Wood frame features radiused edges for smooth surface contact.
- > Available in all standard and custom wood finishes on Ash.
- > Non-skid glides available for hard-surface floors.

# LOUNGE SEATING

## APPROVED PRODUCT

ON  
STAGE



### NIOS® LOUNGE

- > Mid and high back models available with swivel or sled base.
- > 4-prong swivel pedestal base manufactured in aluminum with auto-return feature as standard.
- > Sled base manufactured in ½" diameter steel rod and comes standard with clear glides.
- > Sled and swivel pedestal base available in standard and premium metal finish selections.
- > Wood legs offered in Beech, Walnut and White Oak, in all standard and custom wood finishes.
- > Metal accent featured between seat and back.
- > Optional under seat book rack features 3" height clearance.
- > Rotating tablet available in veneer, laminate, and Corian®.



### OVATE® LOUNGE

- > Armless lounge, love seat and sofa models.
- > Upholstered frame supports seat and back cushions with elegance and versatility.
- > Wood platform base with 7" height clearance available in Beech, Walnut and White Oak.
- > All standard and custom finishes available.
- > Corian® offered in four standard colors.

# GUEST SEATING

## APPROVED PRODUCT

ON  
STAGE



### SAVINA LOUNGE

- > Lounge and love seat models.
- > End tables offered in veneer, laminate, and Corian®.
- > Fixed legs available in standard and premium metal finishes.
- > Non-skid glides for hard surface floors available.
- > Under-seat power units offered.



### SOLEIL LOUNGE

- > Metal frame available in five standard powdercoat finishes in addition to premium finish selections.
- > Wood, black urethane and Corian® arm cap options.
- > Wood arm caps available in Beech, Walnut and White Oak, in all standard and custom finishes.
- > Corian arm caps available in four standard colors.
- > Features passive flex back, clean-out on all sides including between seat and back, wall-saver leg design and replaceable componentry.

# GUEST SEATING

## APPROVED PRODUCT

ON  
STAGE



### UPTOWN SOCIAL LOUNGE

- > Arm and armless lounge, love seat, sofa and chaise models.
- > 4" and 7" arm widths available on lounge, love seat and sofa models.
- > Chaise lounge available with 4" arm width only.
- > Optional arm cap offered in Walnut or White Oak, as well as Corian.
- > Optional wood trim is featured on all sides below the upholstered frame and is available in Walnut and White Oak.
- > Metal legs available in standard and premium finishes.
- > Power units available on front or side of arms.
- > Accompanying modular seating, benches, occasional tables and pillows also offered.

# GUEST SEATING

## APPROVED PRODUCT

ON  
STAGE



### FLIRT® GUEST

- > 4-leg and swivel base models with fixed or flip-up seat options.
- > 4-leg base available with chrome casters or on glides.
- > Flip-up seat allows endless nesting capability for moving and storage ease.
- > Swivel base features auto-return as standard (fixed seat only).
- > Die-cast aluminum legs available in all standard and premium metal finishes.
- > Optional flip-up rotating tablet offered in Maple, Walnut and White Oak veneer, as well as laminate selections.



### HAVEN GUEST

- > Guest, bariatric, hip/easy access and patient chair models available in two frame options: Beech hardwood or metal.
- > Metal frame offered in five standard powdercoat finishes as well as premium selections.
- > Bariatric settee available in two sizes.
- > Clean-out area between seat and back.
- > Arm caps feature finger-grip design for stability and are generously proportioned to offer greater support.
- > Beech wood, Corian® and black urethane arm cap options available.
- > All standard and custom wood finishes available in addition to laminate and Corian selections.

## GUEST SEATING

### APPROVED PRODUCT

ON  
STAGE



#### KINDRED GUEST

- > Manufactured in Ash wood species.
- > Wood frame features radiused edges for smooth surface contact.
- > Available in all standard and custom wood finishes on Ash.
- > Non-skid glides available for hard-surface floors.



#### NIOS® GUEST

- > Arm and armless models available with wood or metal legs as well as on a swivel pedestal base.
- > Tubular metal arm features black leather arm caps as standard.
- > Wood legs offered in Beech, Walnut and White Oak, in all standard and custom wood finishes.
- > Swivel base presented with auto-return feature.
- > Standard and premium finishes available on arms and metal base styles.
- > Non-skid glides for hard-surface floors offered on all models.

# GUEST SEATING

## APPROVED PRODUCT

ON  
STAGE



### REPRISE GUEST

- > Guest, bariatric, hip/easy access and patient chair models available in two frame options: Beech hardwood or metal.
- > Metal frame offered in three standard finishes as well as premium selections.
- > Bariatric settee available in two sizes.
- > Clean-outs on every side, including between seat and back.
- > Features wall-saver leg design, radiused edges for smooth surface contact, and replaceable componentry.
- > Beech wood, Corian® and black or grey urethane arm cap options available.
- > All standard and custom wood finishes available in addition to laminate and Corian selections.



### SIGN GUEST

- > Rectangular steel cantilever frame available in two finishes: Metallic Silver or Chrome.
- > Fully upholstered seat and back.
- > Wood and black urethane arm cap options.
- > Wood arm caps available in all standard and custom finishes on Beech.
- > Black glides standard.

# GUEST SEATING

## APPROVED PRODUCT

ON  
STAGE



### SOLEIL GUEST

- > Guest, bariatric, patient and hip/easy access chair models available.
- > Metal frame available in five standard powdercoat finishes in addition to premium finish selections.
- > Wood, black urethane and Corian® arm cap options.
- > Wood arm caps available in Beech, Walnut and White Oak, in all standard and custom finishes.
- > Corian arm caps available in four standard colors.
- > Bariatric models accommodate up to 750 lbs. and are available in two sizes.
- > All models feature passive flex back, clean-out on all sides including between seat and back, wall-saver leg design and replaceable componentry.
- > Accompanying tandem and lounge seating as well as occasional tables offered.



# BENCH SEATING

## APPROVED PRODUCT

ON  
STAGE



### ALLSORTS BENCHES

- > Models offered with or without backs and with table options.
- > Features Ash wood platform with solid wood edge.
- > Leg finish offered in Matte Black as standard as well as premium finish selections.
- > Under-seat power units for seating units and power bands for table placement.



### LIVIA BENCHES

- > Straight and scalloped benches available in Maple, Walnut and White Oak.
- > Metal frame and spacers available in standard and premium finish selections.
- > Optional upholstered seat pad offered on straight benches only.

# BENCH SEATING

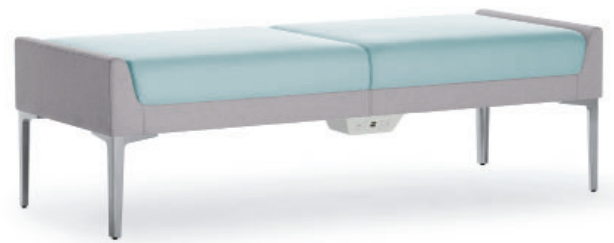
## APPROVED PRODUCT

ON  
STAGE



### RADIANT BENCHES

- > Benches manufactured in Maple, Walnut and White Oak wood species.
- > Available in two and three-seat models.
- > Features inset seat cushions with suspension support for optimum comfort.
- > Metal frame available in standard and premium color selections.
- > Standard finishes include: #06 Charcoal Grey, #90 Metallic Silver and #92 Polished Aluminum.



### SAVINA BENCHES

- > Two- and three-seat bench models offered.
- > Fixed legs available in standard and premium metal finishes.
- > Power units offered with under-seat placement.
- > Accompanying lounge seating, modular seating and occasional tables available.

# BARIATRIC SEATING

## APPROVED PRODUCT

ON  
STAGE



### HAVEN BARIATRIC

- > Available in two frame options: Beech hardwood or metal.
- > Metal frame offered in five standard powdercoat finishes as well as premium selections.
- > Bariatric settee available in two sizes.
- > Clean-out area between seat and back.
- > Arm caps feature finger-grip design for stability and are generously proportioned to offer greater support.
- > Beech wood, Corian® and black urethane arm cap options available.
- > All standard and custom wood finishes available in addition to laminate and Corian selections.
- > All models feature wall-saver leg design.
- > Accompanying guest, lounge and bench seating as well as occasional tables offered.



### REPRISE BARIATRIC

- > Bariatric settee available in two sizes.
- > Two frame options: Beech hardwood or metal.
- > Metal frame offered in three standard finishes as well as premium selections.
- > Clean-outs on every side, including between seat and back.
- > Features wall-saver leg design, radiused edges for smooth surface contact, and replaceable componentry.
- > Beech wood, Corian® and black or grey urethane arm cap options available.
- > All standard and custom wood finishes available in addition to laminate and Corian selections.

# BARIATRIC SEATING

## APPROVED PRODUCT

ON  
STAGE



### SOLEIL BARIATRIC

- > Metal frame available in five standard powdercoat finishes in addition to premium finish selections.
- > Wood, black urethane and Corian® arm cap options.
- > Wood arm caps available in Beech, Walnut and White Oak, in all standard and custom finishes.
- > Corian arm caps available in four standard colors.
- > Bariatric models accommodate up to 750 lbs. and are available in two sizes.
- > All models feature passive flex back, clean-out on all sides including between seat and back, wall-saver leg design and replaceable componentry.
- > Accompanying guest, tandem and lounge seating as well as occasional tables offered.

## TABLES

### APPROVED PRODUCT

ON  
STAGE



#### ACHELLA TABLES

- > Round, square and rectangle table shape options.
- > Available in multiple sizes as well as custom dimension options.
- > Veneer, laminate or Corian® finish selections. Signature metal legs available in three finishes.



#### ALOFT TABLES

- > Manufactured in Maple, Walnut and White Oak.
- > Available in four standard sizes.
- > Top is ½" clear glass with eased edge.
- > 48" length table features center divider.
- > Metal frame available in Chrome, Metallic Silver and Satin Black.

# TABLES

## APPROVED PRODUCT

ON  
STAGE



### AVELINA TABLES

- > Available in custom 32" table height for ADA compliance, in addition to 42" height.
- > Depth options include: 20", 30", 36" and 42".
- > Offered in Maple, Walnut and White Oak veneer as well as laminate, Corian® and Formica Colorcore® finish options.
- > Panel bases feature adjustable glides as standard for leveling purposes.
- > End panel bases, center panel bases and underside of tables feature removable panels for wire management accessibility.
- > Select technology options for top surface and/or side-mount placement available on all sizes.



### BETWIXT TABLES

- > Occasional tables with wire-rod metal base.
- > Offered in three diameters: 19", 29" and 36".
- > Table top surface available in Ash and Walnut wood veneer as well as laminate, Corian and back-painted glass selections.
- > Metal base offered in standard and premium finishes.

# TABLES

## APPROVED PRODUCT

ON  
STAGE



### FLIRT® TABLES

- > Round and arc square top shapes offered in Maple, Walnut and White Oak veneer as well as laminate, Corian® and back-painted glass.
- > Metal base manufactured in aluminum and offered in standard as well as premium finish selections.
- > Base design facilitates wire management for through-the-surface electrical and/or data capabilities.



### HAVEN TABLES

- > Round, square and rectangle table shapes.
- > Multiple sizes available as well as custom dimension options.
- > Beech wood veneer and laminate.
- > All standard and custom wood finishes available.

# TABLES

## APPROVED PRODUCT

ON  
STAGE



### HUSH TABLES

- > Available in round, convex/convex square and convex/convex rectangle top shapes.
- > Offered in 29" and 39" table heights.
- > Custom height options between 29" - 39" also available.
- > All standard and custom wood finishes available on Beech as well as laminate selections.
- > Base available in Charcoal Grey, Metallic Silver, Chrome and Satin Black finishes as well as premium selections.
- > Bases feature adjustable black glides.



### KINDRED TABLES

- > Round, square, and rectangle top shapes.
- > Manufactured in Ash wood species.
- > Wood veneer, laminate and Corian table top selections.



# TABLES

## APPROVED PRODUCT

ON  
STAGE



### NIOS® TABLES

- > Round, arc square and arc rectangle top shapes.
- > Offered in 15" height.
- > Custom height options below 15" also available.
- > Four table surface options: veneer, laminate, Corian® and back-painted glass.
- > Veneer offered in Maple, White Oak and Walnut.
- > Metal base manufactured in aluminum and offered in standard as well as premium finish selections.
- > Base design facilitates wire management for through-the-surface electrical and/or data capabilities.



### OVATE® TABLES

- > Tables manufactured in Beech, Walnut and White Oak.
- > Round, oval, square and rectangle shapes available in a variety of sizes.
- > All standard and custom wood finishes available as well as laminate and Corian® selections.
- > All tables feature wood platform base with 7" height clearance.
- > Accompanying lounge and bench seating available.

# TABLES

## APPROVED PRODUCT

ON  
STAGE



### REPRISE TABLES

- > Round, square, and rectangle top shape options offered 20" height.
- > Manufactured in Beech wood species.
- > Table top surface available in wood veneer as well as laminate and Corian.
- > Accompanying guest and tandem seating units also offered.



### SAVINA TABLES

- > Round and racetrack shapes with floating top design detail.
- > Tops available in Ash veneer as well as laminate, Corian® and back-painted glass.
- > All standard and custom wood finishes available.
- > Corian top available in four standard colors.
- > Back-painted glass available in #94 Cotton and can be used as a writable surface with dry-erase markers.
- > Accompanying lounge seating, modular seating and benches.

# TABLES

## APPROVED PRODUCT

ON  
STAGE



### SOLEIL TABLES

- > Available in round, triangle and ellipse shapes, in a variety of sizes.
- > Tables manufactured in Beech, Walnut and White Oak.
- > Available in all standard and custom wood finishes.
- > Laminate and Corian® top surface options also offered.
- > Metallic Silver, Satin Black, Chrome or Wood fixed leg options.
- > Premium metal leg finishes also offered.
- > Accompanying guest, tandem and lounge seating available.



### VERO TABLES

- > Round, square, rectilinear and rectangle top shape options offered in three heights: 27", 29" and 42".
- > Available in Maple, Walnut and White Oak wood veneer as well as laminate and Corian® selections.
- > Signature metal base available in standard and premium finishes.
- > Standard finishes include Polished Aluminum, Metallic Silver and Charcoal Grey.
- > Base design facilitates wire management for through-the-surface power capability.
- > Various power units available to address specific electrical and/or data preferences.

# CHILDREN'S FURNITURE

## APPROVED PRODUCT

ON  
STAGE



### LEAFLETTE COLLECTION

- > Children's lounge units feature leaf-inspired shape to enable seated comfort in any direction.
- > Benches offered in three shapes and can be configured with lounge chairs, tables and benches.
- > Buds benches feature plinth base and are available individually in four shapes for stand-alone requirements or joined together in modular combinations with other Bud units.
- > Connecting table available in five sizes to create straight or curved configurations.
- > Tables join together with all Leaflette lounge and bench models as well as their adult counterparts.



### SMALLSORTS COLLECTION

- > Children bench units available with or without backs.
- > Leg finish offered in Matte Black as standard as well as premium finish selections.
- > Under-seat USB charging units available.

# ARCADIA + KAISER

## APPROVED PRODUCT INDEX

OFF  
STAGE

### LOUNGE SEATING



ACHELLA



ALOFT



CO-OP



DOMO



FLIRT®



HAVEN



HUDDLE



INTIMA



NIOS®



OVATE®



SAVINA



SOLEIL

### TABLES



BETWIXT



FLIRT®



NIOS®



SAVINA



VERO

# LOUNGE + MODULAR

## APPROVED PRODUCT

OFF  
STAGE



### ACHELLA LOUNGE

- > Lounge, love seat and sofa models.
- > Standard base configuration includes Maple wood platform with fixed metal legs or casters.
- > Wood platform available in all standard and custom wood finishes on Maple.
- > Signature metal leg available in Polished Aluminum, Metallic Silver and Satin Black finish options.
- > Multi-functional accessories to include rotating tablet, cup holder and power units, available on select models.



### ALOFT LOUNGE

- > Fully upholstered seat and back.
- > Available in Maple, Walnut and White Oak wood species with horizontal wood grain pattern.
- > Metal frame offered in Chrome, Metallic Silver and Satin Black.
- > Accompanying benches and occasional tables available.

# LOUNGE + MODULAR

## APPROVED PRODUCT

OFF  
STAGE



### CO-OP LOUNGE

- > Collection includes public and private seating models - with and without canopy.
- > Stand-alone, wall-mount panel units and single units also available.
- > Integrated tables featured on select models, in multiple sizes and heights as applicable.
- > Public versions stand 43½" tall; private at 56¾" high and private with canopy at 88½" high.
- > Canopy available with or without overhead cut-out detail.
- > Accent tier on select models available upholstered or in veneer, laminate or whiteboard material for added functionality.
- > Accent tier, tables and shelf offered in Maple, Walnut and White Oak wood veneer in addition to laminate selections.
- > All units feature 2" high black plinth base.



### DOMO LOUNGE

- > Arm and armless lounge, love seat and sofa models.
- > Swivel-base and mobile lounge chairs also offered as well as lounge/bench combinations.
- > Lounge chair swivel base features auto-return as standard.
- > Select models available individually or in modular combinations with 90-degree corner lounge units, connecting tables and benches.
- > Optional rotating tablet available in veneer, laminate or Corian® finishes.



# LOUNGE + MODULAR

## APPROVED PRODUCT

OFF  
STAGE



### FLIRT® LOUNGE

- > Mid and high back models available with 4-leg or swivel base.
- > 4-leg base available with chrome casters or on glides.
- > Fixed seat or flip-up for infinite nesting capability.
- > Swivel base features auto-return as standard (fixed seat only).
- > Die-cast aluminum legs available in all standard and premium metal finishes.
- > Optional flip-up rotating tablet offered.
- > Tablet available in Maple, Walnut and White Oak veneer, as well as laminate selections.



### HAVEN LOUNGE

- > Collection includes lounge, love seat and sofa models offered in two frame options: Beech hardwood or metal.
- > Metal frame offered in five standard powdercoat finishes as well as premium selections.
- > Models available with open, panel or upholstered arms featuring Beech wood, black urethane and Corian® arm cap options.
- > Arm rest on all units features finger-grip design for stability and is generously proportioned to offer greater support.
- > Tandem lounge units are reconfigurable and can be ordered in any combination and quantity.
- > All models standard with clean-out area between seat and back and wall-saver leg design.
- > Optional rotating tablet available on select models and is offered in Beech veneer, laminate and Corian options.
- > Casters, cup holder and side-mount power units also offered in addition to pull handle for moving ease.

# LOUNGE + MODULAR

## APPROVED PRODUCT

OFF  
STAGE



### HUDDLE LOUNGE

- > Lounge, love seat and sofa models.
- > 3" higher back offered on lounge models.
- > Two standard metal platform base configurations: casters or fixed wood legs.
- > Metal platform available in Metallic Silver and Satin Black finishes.
- > Wood legs available in all standard and custom finishes on Beech.
- > Mobile version available on lounge models only and features two locking casters in rear and two non-locking casters in front.
- > Multi-functional accessories to include rotating tablet and various power units available on select models.



### INTIMA LOUNGE

- > Arm and armless lounge, love seat and sofa models.
- > Lounge models offered in two sizes, 29" standard or narrower 26".
- > Metal leg available in standard and premium metal finish selections.
- > Multi-functional accessories include rotating tablet, casters, cup holder, pull handle and side-mount power units.

# LOUNGE + MODULAR

## APPROVED PRODUCT

OFF  
STAGE



### NIOS® LOUNGE

- > Mid and high back models available with swivel or sled base.
- > 4-prong swivel pedestal base manufactured in aluminum with auto-return feature as standard.
- > Sled base manufactured in ½" diameter steel rod and comes standard with clear glides.
- > Sled and swivel pedestal base available in standard and premium metal finish selections.
- > Wood legs offered in Beech, Walnut and White Oak, in all standard and custom wood finishes.
- > Metal accent featured between seat and back.
- > Optional under seat book rack features 3" height clearance.
- > Rotating tablet available in veneer, laminate, and Corian®.



### OVATE LOUNGE

- > Arm and armless lounge, love seat and sofa models.
- > Armless units presented with an elegant upholstered frame.
- > Wood platform base with 7" height clearance available in Beech, Walnut and White Oak.
- > All standard and custom wood finishes available.

# LOUNGE + MODULAR

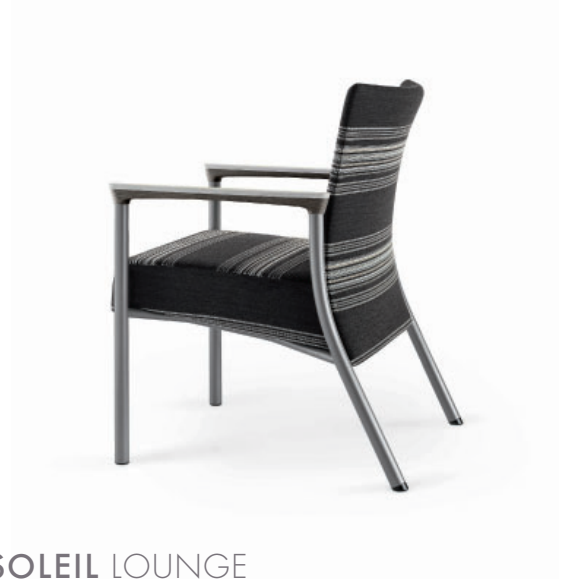
## APPROVED PRODUCT

OFF  
STAGE



### SAVINA LOUNGE

- > Lounge and love seat models.
- > End tables offered in veneer, laminate, and Corian®.
- > Fixed legs available in standard and premium metal finishes.
- > Non-skid glides for hard surface floors available.
- > Under-seat power units offered.
- > Accompanying tandem seating, benches and occasional tables complement lounge units.



### SOLEIL LOUNGE

- > Metal frame available in five standard powdercoat finishes in addition to premium finish selections.
- > Wood, black urethane and Corian® arm cap options.
- > Wood arm caps available in Beech, Walnut and White Oak, in all standard and custom finishes.
- > Corian arm caps available in four standard colors.
- > Features passive flex back, clean-out on all sides including between seat and back, wall-saver leg design and replaceable componentry.

# TABLES

## APPROVED PRODUCT

OFF  
STAGE



### BETWIXT TABLES

- > Occasional tables with wire-rod metal base.
- > Offered in three diameters: 19", 29" and 36".
- > Table top surface available in Ash and Walnut wood veneer as well as laminate, Corian and back-painted glass selections.
- > Metal base offered in standard and premium finishes.



### FLIRT® TABLES

- > Round and arc square top shapes offered in Maple, Walnut and White Oak veneer as well as laminate, Corian® and back-painted glass.
- > Metal base manufactured in aluminum and offered in standard as well as premium finish selections.
- > Base design facilitates wire management for through-the-surface electrical and/or data capabilities.

# TABLES

## APPROVED PRODUCT

OFF  
STAGE



### NIOS® TABLES

- > Round, arc square and arc rectangle top shapes.
- > Offered in 15" height.
- > Custom height options below 15" also available.
- > Four table surface options: veneer, laminate, Corian® and back-painted glass.
- > Veneer offered in Maple, White Oak and Walnut.
- > Metal base manufactured in aluminum and offered in standard as well as premium finish selections.
- > Base design facilitates wire management for through-the-surface electrical and/or data capabilities.



### SAVINA TABLES

- > Round and racetrack shapes with floating top design detail.
- > Tops available in Ash veneer as well as laminate, Corian® and back-painted glass.
- > All standard and custom wood finishes available.
- > Corian top available in four standard colors.
- > Back-painted glass available in #94 Cotton and can be used as a writable surface with dry-erase markers.
- > Accompanying lounge seating, modular seating and benches.

# TABLES

## APPROVED PRODUCT

OFF  
STAGE



### VERO TABLES

- > Round, square, rectilinear and rectangle top shape options offered in three heights: 27", 29" and 42".
- > Available in Maple, Walnut and White Oak wood veneer as well as laminate and Corian® selections.
- > Signature metal base available in standard and premium finishes.
- > Standard finishes include Polished Aluminum, Metallic Silver and Charcoal Grey.
- > Base design facilitates wire management for through-the-surface power capability.
- > Various power units available to address specific electrical and/or data preferences.