

HAVEN





#4950-U Patient Chair shown with #490-1818 Haven Occasional Table and #DBR-723228 Transpire Daybed



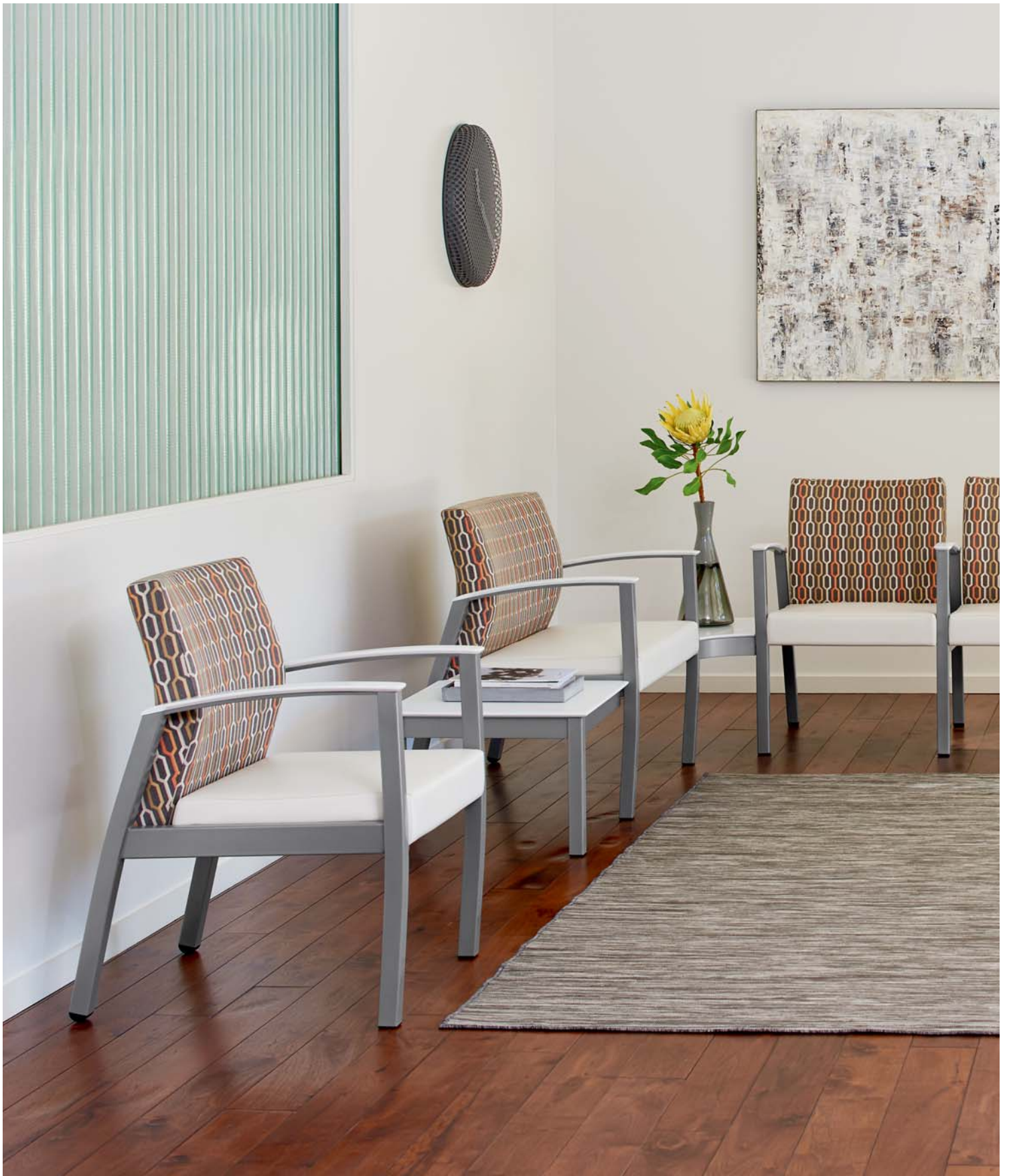
Clean-out area between seat and back provides maintenance ease.

HAVEN

Find solace in Haven, a comprehensive offering of guest, tandem and ancillary seating products that combines classic style with noteworthy substance. With replaceable upholstery capabilities and clean-out functionality, Haven is ideal for healthcare applications. Yet, it also features a passive flex back for exceptional comfort and replaceable arm caps for lasting beauty, making it equally appealing for corporate, hospitality, higher education environments and more. Flexible, stylish and definitively durable, Haven is the quintessential place to relax while waiting.



#4910-W-PA Guest Chair presented with Avelina Meeting Table



#M4910-CO Guest Chair, #M4957-CO Hip Chairs and Tandem Configuration with
#M4945-CO Bariatric Chair, #M4910-2-CO Two-Seater and Connecting Tables











Tandem unit comprised of #4910-U Guest Chairs and #4917-22 22" In-Line Table

On The Cover: #4910-W Guest Chair and Tandem Configuration with #4940-ST-W Bariatric Starter Unit, #4920-EU-W End Unit and #4918-22 22" Wide End Table

PRODUCT SPECIFICATIONS

Available in Beech hardwood or metal frame options. Metal frame offered in five standard powdercoat finishes as well as premium colors. Bariatric settee available in two sizes for stand-alone seating requirements or tandem applications. Arm caps feature finger-grip design for stability and are generously proportioned to offer greater support. Beech wood, Corian® and black urethane arm cap options available. Tandem seating offered in two and three-seat pre-configured combinations or as reconfigurable modular units. Available with or without center arms, as well as with or without center legs. Additional components include two sizes of

in-line benches and six connecting table options. Connecting tables are Beech veneer with Beech wood edge. All standard and custom wood finishes available in addition to laminate and Corian® selections. Optional foot rest may be placed underneath seat of all patient and guest chairs. Hip chair features 24¹/₂" seat height and a non-skid foot step. All models feature passive flex back, clean-out between seat and back, wall-saver leg design and replaceable componentry. Accompanying lounge and bench seating as well as occasional tables offered.

| | | |
|---|--|--|
|  <p>#4910-U Guest Chair Urethane Arm Caps W 25 x D 25³/₄ x H 34</p> |  <p>#4910-W Guest Chair Wood Arm Caps W 25 x D 25³/₄ x H 34</p> |  <p>#M4910-CO Guest Chair Corian Arm Caps W 25 x D 25³/₄ x H 34</p> |
|  <p>#M4945-CO Bariatric Settee Corian Arm Caps W 40 x D 25³/₄ x H 34</p> |  <p>#M4957-CO Hip Chair Corian Arm Caps W 25 x D 25³/₄ x H 40</p> |  <p>#4950-U Patient Chair Urethane Arm Caps W 25 x D 25³/₄ x H 44</p> |

DESIGNED BY DAVID DAHL

